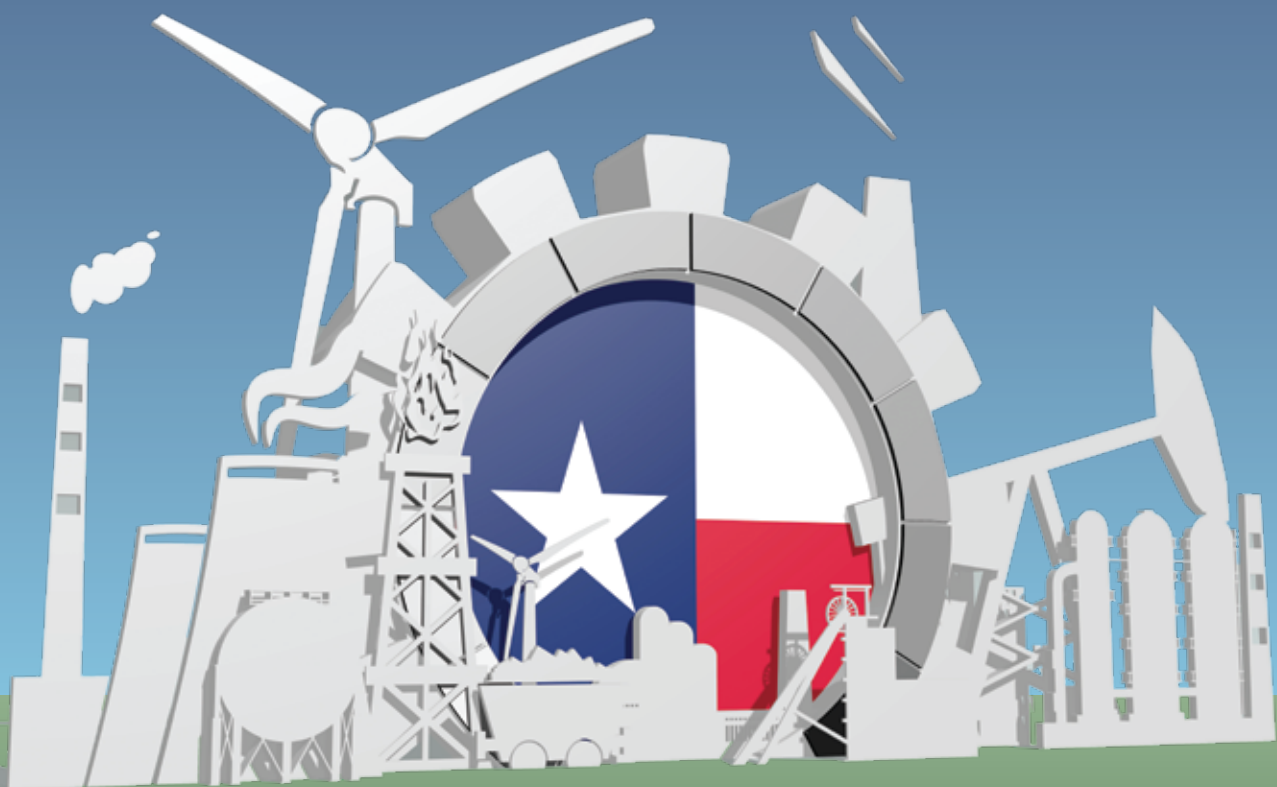


# Texas Employment Report



TEXAS A&M UNIVERSITY

Texas Real Estate Research Center <sup>EST. 1971</sup> 5

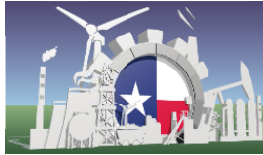
Luis B. Torres, Research Economist  
Joshua Roberson, Senior Data Analyst

TECHNICAL REPORT

2303

October 2021 Data

TR



# October 2021 Summary

NONFARM EMPLOYMENT	UNEMPLOYMENT RATE	MINING AND LOGGING	OTHER SERVICES	PROFESSIONAL AND BUSINESS SERVICES
▲ 0.4% MOM	▼ 5.4%	▲ 1.3% MOM	▲ 2.2% MOM	▲ 1.1% MOM

- Texas added 56,600 jobs in October, a 0.4 percent increase over September. It matched the nation's growth rate of 0.4 percent.
- The state has gained jobs in 17 of the last 18 months.
- The Texas economy now needs to gain almost 60,100 jobs to return to pre-pandemic levels.
- Texas' unemployment rate fell to 5.4 percent in October, down 0.2 percentage points from the previous month. The state had a higher unemployment rate than the nation's 4.6 percent. The unemployment rate has a long way to drop to reach pre-pandemic levels of 3.7 percent.
- The states' labor force increased by 38,981 from September to October 2021, surpassing pre-pandemic levels.
- Record job openings suggest that while the economy is still short of pre-COVID employment levels, it is not due to insufficient labor demand.
  - Texas job openings reached 807,000 in September, below July's record level of 928,000.
  - Job openings are greater than the number of unemployed for a third straight month from July to September.
- Childcare, the lingering pandemic, early retirement, and the possibility that people are rethinking their career paths are affecting the transition from unemployment to employment.
- The labor force participation rate improved slightly in October 2021, increasing to 62.5 percent. It reached a trough during 2Q2021 and is slowly increasing.
- The state's goods-producing sector added 7,900 jobs from September to October 2021. The manufacturing industry registered the biggest gain, adding 2,800 jobs. Construction and mining and logging industries also registered job growth, gaining 2,600 and 2,500 jobs, respectively.
- The state's service-providing sector added 48,700 jobs from September to October 2021. The services sectors that registered the biggest job gains were professional and business services, which added 21,900 jobs; trade, transportation, and utilities, which gained 15,000 jobs; and the other services sector, which gained 9,100 jobs over the month.
- The leisure and hospitality sector added 7,600 jobs in October, registering two consecutive months of gains. The two-month job increase indicates that the effects of the upsurge in COVID-19 cases and hospitalizations due to the presence of the Delta variant had a one-month negative effect on hiring.
  - In August, this sector lost 24,200 jobs during the upsurge in COVID cases, but with the job gains between September and October, the sector has recuperated the lost jobs, adding 6,400 net jobs during this three-month span.
  - In addition, accommodation and food service firms have reported sizable numbers of unfilled positions and are having difficulty finding applicants, which has hindered hiring.

- Transportation, warehousing, and utilities; financial activities; professional business services; wholesale trade; and retail trade are the only sectors that recovered all jobs lost due to the pandemic.
- Midland registered the highest annual growth rate of all Texas Metropolitan Statistical Areas (MSAs) from October 2020 to October 2021.\*
  - Oil prices above \$60/barrel have been accompanied by six months of consecutive job gains in the oil sector.
  - No significant employment gains are expected if oil prices do not exceed \$70/barrel for a prolonged period.
  - Midland has recovered only 8.7 percent of the jobs lost due to the pandemic, while neighboring Odessa is still down 21.2 percent of the jobs to pre-COVID levels.
- Austin-Round Rock registered the highest annual growth rate of Texas' four major MSAs from October 2020 to October 2021. The metro benefited from its substantial high-tech sector, which can socially distance and has prospered during the pandemic.\*
- McAllen-Edinburg-Mission registered the highest annual growth rate of Texas' four major border MSAs from October 2020 to October 2021.\*
- Abilene, Killeen-Temple, and Lubbock joined Amarillo, Austin, McAllen-Edinburg-Mission, Sherman-Denison, Tyler, and Waco as the only metropolitan areas to have recovered all jobs lost due to the pandemic.
- Government employment decreased monthly but increased annually during October 2021. The monthly decrease was a result of decreases in both federal and local government employment.

Table 1  
Texas and U.S. Labor Markets

NonFarm Employment	October 2021	October 2020	Change	
			Absolute	Percent
Texas	12,909,900	12,248,600	661,300	5.4
United States	148,319,000	142,545,000	5,774,000	4.1

Private Employment	October 2021	October 2020	Change	
			Absolute	Percent
Texas	10,930,900	10,286,300	644,600	6.3
United States	126,393,000	120,962,000	5,431,000	4.5

Labor Participation	October 2021		Unemployment Rate, Percent	
	Labor Force	Unemployed	October 2021	October 2020
Texas	14,204,236	769,958	5.4	7.3
United States	161,458,000	7,419,000	4.6	6.9

Sources: Texas Workforce Commission and U.S. Bureau of Labor Statistics

Table 2  
Texas Industries and Government Sector Ranked by Employment Growth Rate

Rank	Industry	October 2021	October 2020	Change	% Change
1	Mining and Logging	199,600	172,000	27,600	16.05
2	Leisure and Hospitality	1,320,200	1,184,500	135,700	11.46
3	Professional and Business Services	1,948,700	1,773,000	175,700	9.91
4	Other Services	427,100	392,900	34,200	8.70
5	Transportation, Warehousing, Utilities	652,300	610,300	42,000	6.88
6	Information	207,500	196,300	11,200	5.71
7	Trade	1,967,000	1,883,400	83,600	4.44
8	Financial Activities	836,300	804,000	32,300	4.02
9	Manufacturing	886,900	855,600	31,300	3.66
10	Education and Health Services	1,751,000	1,694,400	56,600	3.34
11	Construction	734,300	719,900	14,400	2.00
12	Government	1,979,000	1,962,300	16,700	0.85

Sources: Texas Workforce Commission and Texas Real Estate Research Center at Texas A&M University

Note: Analysis based on nonseasonally adjusted data

Table 3  
Texas Industries' and Government's Shares of Employment

Rank	Industry	October	October
		2021	2020
		Percent	Percent
1	Government	15.33	16.02
2	Trade	15.24	15.38
3	Professional and Business Services	15.09	14.48
4	Education and Health Services	13.56	13.83
5	Leisure and Hospitality	10.23	9.67
6	Manufacturing	6.87	6.99
7	Financial Activities	6.48	6.56
8	Construction	5.69	5.88
9	Transportation, Warehousing, Utilities	5.05	4.98
10	Other Services	3.31	3.21
11	Information	1.61	1.60
12	Mining and Logging	1.55	1.40
Total		100.00	100.00

Sources: Texas Workforce Commission and Texas Real Estate Research Center at Texas A&M University

Note: Components may not add up to totals due to rounding

Table 4  
Contributions of Texas Industries and the Government Sector to Texas Employment Growth Rate

Rank	Industry	October	October
		2021	2020
		Percent	Percent
1	Professional and Business Services	1.4344	-0.2971
2	Leisure and Hospitality	1.1079	-1.7312
3	Trade	0.6825	-0.3963
4	Education and Health Services	0.4621	-0.4793
5	Transportation, Warehousing, Utilities	0.3429	0.1419
6	Other Services	0.2792	-0.4266
7	Financial Activities	0.2637	-0.0427
8	Manufacturing	0.2555	-0.3963
9	Mining and Logging	0.2253	-0.5414
10	Government	0.1363	-0.2226
11	Construction	0.1176	-0.4910
12	Information	0.0914	-0.1148
Total		5.3990	-4.9973

Sources: Texas Workforce Commission and Texas Real Estate Research Center at Texas A&M University

Note: Components may not add up to totals due to rounding

Table 5  
Texas Metropolitan Areas Ranked by Employment Growth Rate

Rank	Metropolitan Area	October 2021	October 2020	Change	% Change
1	Midland	98.9	92.3	6.6	7.2
2	Tyler	112.5	105	7.5	7.1
3	Austin-Round Rock	1169.4	1095.7	73.7	6.7
4	Abilene	73.7	69.9	3.8	5.4
5	Dallas-Plano-Irving	2760.6	2625.6	135	5.1
6	Beaumont-Port Arthur	159.8	152	7.8	5.1
7	McAllen-Edinburg-Mission	275.3	262.1	13.2	5.0
8	Houston-The Woodlands-Sugar Land	3085.6	2950.6	135	4.6
9	San Antonio-New Braunfels	1087.3	1040	47.3	4.5
10	Longview	94.6	90.7	3.9	4.3
11	Sherman-Denison	49.7	47.8	1.9	4.0
12	Corpus Christi	185.5	178.7	6.8	3.8
13	Killeen-Temple-Fort Hood	146.9	141.7	5.2	3.7
14	Fort Worth-Arlington	1099.5	1061.3	38.2	3.6
15	Waco	126.8	122.6	4.2	3.4
16	Lubbock	151.1	146.3	4.8	3.3
17	Odessa	69.8	67.6	2.2	3.3
18	Laredo	102.9	99.7	3.2	3.2
19	Amarillo	122.6	119	3.6	3.0
20	Wichita Falls	57.7	56.1	1.6	2.9
21	El Paso	320.9	312.5	8.4	2.7
22	Brownsville-Harlingen	143.1	139.4	3.7	2.7
23	Texarkana	58.4	57.5	0.9	1.6
24	College Station-Bryan	118.5	116.9	1.6	1.4
25	San Angelo	48	47.4	0.6	1.3
26	Victoria	38	37.7	0.3	0.8
Micropolitan Texas		1152.8	1012.5	140.3	13.9

Sources: Texas Workforce Commission and Texas Real Estate Research Center at Texas A&M University

Note: Analysis based on nonseasonally adjusted data

Table 6  
Texas Metropolitan and Micropolitan Shares of Total Texas Jobs

Rank	Metropolitan Area	October 2021 Percent	October 2020 Percent
1	Houston-The Woodlands-Sugar Land	23.9010	24.0893
2	Dallas-Plano-Irving	21.3836	21.4359
3	Austin-Round Rock	9.0582	8.9455
4	Fort Worth-Arlington	8.5167	8.6647
5	San Antonio-New Braunfels	8.4222	8.4908
6	El Paso	2.4857	2.5513
7	McAllen-Edinburg-Mission	2.1325	2.1398
8	Corpus Christi	1.4369	1.4589
9	Beaumont-Port Arthur	1.2378	1.2410
10	Lubbock	1.1704	1.1944
11	Killeen-Temple-Fort Hood	1.1379	1.1569
12	Brownsville-Harlingen	1.1085	1.1381
13	Waco	0.9822	1.0009
14	Amarillo	0.9497	0.9715
15	College Station-Bryan	0.9179	0.9544
16	Tyler	0.8714	0.8572
17	Laredo	0.7971	0.8140
18	Midland	0.7661	0.7536
19	Longview	0.7328	0.7405
20	Abilene	0.5709	0.5707
21	Odessa	0.5407	0.5519
22	Texarkana	0.4524	0.4694
23	Wichita Falls	0.4469	0.4580
24	Sherman-Denison	0.3850	0.3902
25	San Angelo	0.3718	0.3870
26	Victoria	0.2943	0.3078
Micropolitan Texas		8.9296	8.2663
Total		100.0000	100.0000

Sources: Texas Workforce Commission and Texas Real Estate Research Center at Texas A&M University

Note: Components may not add up to totals due to rounding

Table 7

## Contributions of Texas Metropolitan and Micropolitan Areas to Total Texas Employment Growth Rate

Rank	Metropolitan Area	October 2021	October 2020
1	Houston-The Woodlands-Sugar Land	1.1022	-1.7622
2	Dallas-Plano-Irving	1.1022	-0.7524
3	Austin-Round Rock	0.6017	-0.2629
4	San Antonio-New Braunfels	0.3862	-0.3102
5	Fort Worth-Arlington	0.3119	-0.3110
6	McAllen-Edinburg-Mission	0.1078	-0.0853
7	El Paso	0.0686	-0.1148
8	Beaumont-Port Arthur	0.0637	-0.1055
9	Tyler	0.0612	-0.0256
10	Corpus Christi	0.0555	-0.1171
11	Midland	0.0539	-0.1644
12	Killeen-Temple-Fort Hood	0.0425	-0.0318
13	Lubbock	0.0392	-0.0403
14	Waco	0.0343	-0.0016
15	Longview	0.0318	-0.0721
16	Abilene	0.0310	-0.0256
17	Brownsville-Harlingen	0.0302	-0.0473
18	Amarillo	0.0294	-0.0233
19	Laredo	0.0261	-0.0683
20	Odessa	0.0180	-0.1249
21	Sherman-Denison	0.0155	-0.0093
22	College Station-Bryan	0.0131	-0.0582
23	Wichita Falls	0.0131	-0.0248
24	Texarkana	0.0073	-0.0264
25	San Angelo	0.0049	-0.0194
26	Victoria	0.0024	-0.0264
Micropolitan Texas		1.1454	-0.3863
Total		5.3990	-4.9973

Sources: Texas Workforce Commission and Texas Real Estate Research Center at Texas A&M University

Note: Components may not add up to totals due to rounding



Table 8  
Texas Metropolitan Areas Ranked by Unemployment Rate  
October 2021

Rank	Metropolitan Area	Unemployment Rate, %
1	Amarillo	3.3
2	Austin-Round Rock	3.4
3	College Station-Bryan	3.7
4	Abilene	3.8
5	Lubbock	3.8
6	Sherman-Denison	4.0
7	Waco	4.1
8	Dallas-Plano-Irving	4.2
9	San Angelo	4.2
10	Texarkana	4.2
11	Tyler	4.2
12	Fort Worth-Arlington	4.3
13	San Antonio-New Braunfels	4.3
14	Wichita Falls	4.3
15	Midland	4.7
16	Texas	4.8
17	Killeen-Temple-Fort Hood	4.9
18	El Paso	5.3
19	Laredo	5.3
20	Longview	5.3
21	Houston-The Woodlands-Sugar Land	5.4
22	Victoria	5.6
23	Corpus Christi	6.1
24	Odessa	6.7
25	Brownsville-Harlingen	7.1
26	Beaumont-Port Arthur	7.6
26	McAllen-Edinburg-Mission	7.6

Sources: Texas Workforce Commission and Texas Real Estate Research Center at Texas A&M University

Table 9  
 Employment Growth or Decline Rates by Industry in Large Metropolitan Areas  
 Annual Percentage Change from October 2020 to October 2021

Industry:	Largest Texas Metropolitan Areas					
	Houston	Dallas	San Antonio	Fort Worth	Austin	El Paso
Mining and Construction	2.54	-1.89	2.10	-0.82	1.15	3.95
Manufacturing	0.91	3.33	2.17	0.00	3.97	-3.57
Trade, Transportation and Utilities	3.62	5.65	2.93	3.32	7.42	5.49
Information	2.48	0.73	2.21	2.13	6.80	6.67
Financial Activities	-0.24	1.69	3.07	0.15	8.89	1.52
Professional and Business Services	6.58	11.14	6.85	13.27	12.65	-0.54
Education and Health Services	6.29	2.15	-0.25	2.25	1.62	3.83
Leisure and Hospitality	11.01	12.01	17.85	5.72	19.83	8.38
Other Services	14.22	7.70	5.51	16.26	6.68	3.70
Government	0.49	0.13	3.56	0.72	0.00	0.00

Sources: Texas Workforce Commission and Texas Real Estate Research Center at Texas A&M University

**Table 10**

<b>Texas Nonfarm Seasonally Adjusted Employees</b>					
<b>Industry Title</b>	<b>October 2021</b>	<b>Last Month</b>		<b>Last Year</b>	
		<b>Employed</b>	<b>Percent Change</b>	<b>Employed</b>	<b>Percent Change</b>
<b>Total Nonagricultural</b>	12,909,900	12,853,300	0.4%	12,248,600	5.4%
<b>Total Private</b>	10,930,900	10,861,400	0.6%	10,286,300	6.3%
<b>Goods Producing</b>	1,820,800	1,812,900	0.4%	1,747,500	4.2%
<b>Mining and Logging</b>	199,600	197,100	1.3%	172,000	16.0%
<b>Construction</b>	734,300	731,700	0.4%	719,900	2.0%
<b>Manufacturing</b>	886,900	884,100	0.3%	855,600	3.7%
<b>Service Providing</b>	11,089,100	11,040,400	0.4%	10,501,100	5.6%
<b>Trade, Transportation and Utilites</b>	2,619,300	2,604,300	0.6%	2,493,700	5.0%
<b>Information</b>	207,500	207,100	0.2%	196,300	5.7%
<b>Financial Activities</b>	836,300	834,200	0.3%	804,000	4.0%
<b>Professional and Business Services</b>	1,948,700	1,926,800	1.1%	1,773,000	9.9%
<b>Education and Health Services</b>	1,751,000	1,745,500	0.3%	1,694,400	3.3%
<b>Leisure and Hospitality</b>	1,320,200	1,312,600	0.6%	1,184,500	11.5%
<b>Other Services</b>	427,100	418,000	2.2%	392,900	8.7%
<b>Government</b>	1,979,000	1,991,900	-0.6%	1,962,300	0.9%

Sources: Texas Workforce Commission and Texas Real Estate Research Center at Texas A&M University

**Table 11**

<b>Austin-Round Rock Nonfarm Seasonally Adjusted Employees</b>					
<b>Industry Title</b>	<b>October 2021</b>	<b>Last Month</b>		<b>Last Year</b>	
		<b>Employed</b>	<b>Percent Change</b>	<b>Employed</b>	<b>Percent Change</b>
<b>Total Nonagricultural</b>	1,170,032	1,160,181	0.8%	1,092,743	7.1%
<b>Total Private</b>	981,954	971,645	1.1%	904,667	8.5%
<b>Goods Producing</b>	136,023	135,885	0.1%	132,726	2.5%
<b>Mining, Logging and Construction</b>	70,465	70,412	0.1%	69,666	1.1%
<b>Manufacturing</b>	65,771	65,177	0.9%	63,244	4.0%
<b>Service Providing</b>	1,032,788	1,025,015	0.8%	958,922	7.7%
<b>Trade, Transportation and Utilities</b>	202,309	199,504	1.4%	188,328	7.4%
<b>Information</b>	42,245	42,027	0.5%	39,552	6.8%
<b>Financial Activities</b>	74,555	72,510	2.8%	68,449	8.9%
<b>Professional and Business Services</b>	226,975	222,641	1.9%	201,356	12.7%
<b>Education and Health Services</b>	130,900	131,339	-0.3%	128,816	1.6%
<b>Leisure and Hospitality</b>	124,589	123,299	1.0%	103,983	19.8%
<b>Other Services</b>	44,824	43,989	1.9%	42,015	6.7%
<b>Government</b>	187,227	187,675	-0.2%	187,283	0.0%

Sources: Texas Workforce Commission and Texas Real Estate Research Center at Texas A&M University

**Table 12**

<b>Dallas-Fort Worth-Arlington Nonfarm Seasonally Adjusted Employees</b>					
<b>Industry Title</b>	<b>October 2021</b>	<b>Last Month</b>		<b>Last Year</b>	
		<b>Employed</b>	<b>Percent Change</b>	<b>Employed</b>	<b>Percent Change</b>
<b>Total Nonagricultural</b>	3,855,592	3,836,140	0.5%	3,679,643	4.8%
<b>Total Private</b>	3,407,926	3,375,569	1.0%	3,233,039	5.4%
<b>Goods Producing</b>	506,529	506,567	0.0%	503,768	0.5%
<b>Mining, Logging and Construction</b>	218,196	220,616	-1.1%	221,600	-1.5%
<b>Manufacturing</b>	286,203	285,627	0.2%	280,228	2.1%
<b>Service Providing</b>	3,349,029	3,330,550	0.6%	3,175,812	5.5%
<b>Trade, Transportation and Utilites</b>	846,743	835,438	1.4%	807,394	4.9%
<b>Information</b>	79,169	79,526	-0.4%	78,498	0.9%
<b>Financial Activities</b>	332,377	330,317	0.6%	327,900	1.4%
<b>Professional and Business Services</b>	694,961	686,958	1.2%	622,259	11.7%
<b>Education and Health Services</b>	457,488	451,867	1.2%	447,728	2.2%
<b>Leisure and Hospitality</b>	364,524	367,453	-0.8%	331,462	10.0%
<b>Other Services</b>	123,804	121,060	2.3%	112,032	10.5%
<b>Government</b>	452,061	458,846	-1.5%	450,624	0.3%

Sources: Texas Workforce Commission and Texas Real Estate Research Center at Texas A&M University

**Table 13**

<b>Houston-The Woodlands-Sugar Land Nonfarm Seasonally Adjusted Employees</b>					
<b>Industry Title</b>	<b>October 2021</b>	<b>Last Month</b>		<b>Last Year</b>	
		<b>Employed</b>	<b>Percent Change</b>	<b>Employed</b>	<b>Percent Change</b>
<b>Total Nonagricultural</b>	3,089,434	3,074,585	0.5%	2,954,047	4.6%
<b>Total Private</b>	2,678,132	2,663,897	0.5%	2,544,772	5.2%
<b>Goods Producing</b>	483,940	484,776	-0.2%	475,446	1.8%
<b>Mining, Logging and Construction</b>	273,992	274,454	-0.2%	267,212	2.5%
<b>Manufacturing</b>	211,209	210,912	0.1%	209,322	0.9%
<b>Service Providing</b>	2,602,913	2,590,067	0.5%	2,476,316	5.1%
<b>Trade, Transportation and Utilites</b>	637,913	635,287	0.4%	615,628	3.6%
<b>Information</b>	29,247	29,254	0.0%	28,558	2.4%
<b>Financial Activities</b>	163,484	165,925	-1.5%	163,937	-0.3%
<b>Professional and Business Services</b>	511,902	512,597	-0.1%	480,127	6.6%
<b>Education and Health Services</b>	418,193	406,127	3.0%	393,365	6.3%
<b>Leisure and Hospitality</b>	313,893	313,224	0.2%	283,109	10.9%
<b>Other Services</b>	118,040	118,304	-0.2%	103,232	14.3%
<b>Government</b>	411,361	410,443	0.2%	409,347	0.5%

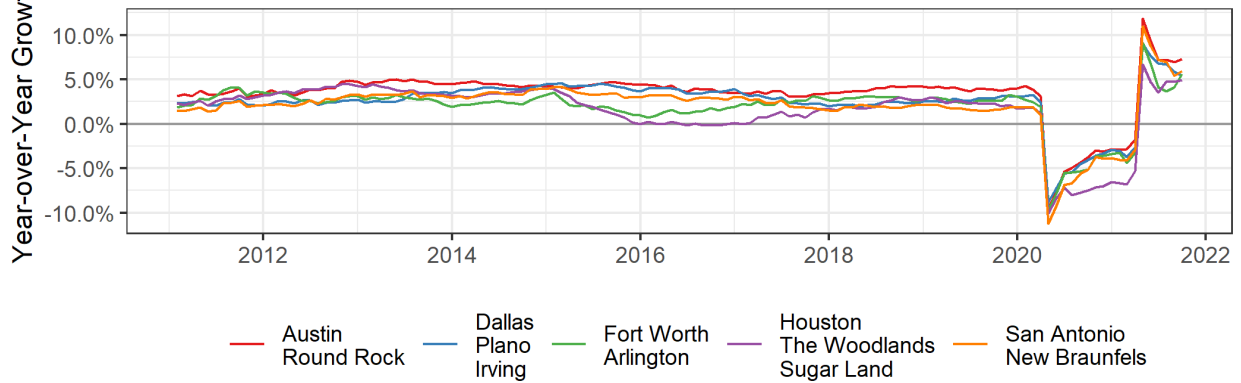
Sources: Texas Workforce Commission and Texas Real Estate Research Center at Texas A&M University

**Table 14**

<b>San Antonio Nonfarm Seasonally Adjusted Employees</b>					
<b>Industry Title</b>	<b>October 2021</b>	<b>Last Month</b>		<b>Last Year</b>	
		<b>Employed</b>	<b>Percent Change</b>	<b>Employed</b>	<b>Percent Change</b>
<b>Total Nonagricultural</b>	1,089,196	1,080,697	0.8%	1,040,207	4.7%
<b>Total Private</b>	910,768	901,439	1.0%	867,900	4.9%
<b>Goods Producing</b>	114,907	114,136	0.7%	112,555	2.1%
<b>Mining, Logging and Construction</b>	63,381	62,994	0.6%	62,083	2.1%
<b>Manufacturing</b>	51,799	51,471	0.6%	50,709	2.2%
<b>Service Providing</b>	973,549	966,403	0.7%	926,977	5.0%
<b>Trade, Transportation and Utilities</b>	188,821	189,486	-0.4%	183,448	2.9%
<b>Information</b>	18,766	18,667	0.5%	18,373	2.1%
<b>Financial Activities</b>	97,284	95,549	1.8%	94,382	3.1%
<b>Professional and Business Services</b>	160,520	157,465	1.9%	150,100	6.9%
<b>Education and Health Services</b>	161,300	162,711	-0.9%	161,686	-0.2%
<b>Leisure and Hospitality</b>	132,919	126,373	5.2%	113,027	17.6%
<b>Other Services</b>	36,560	36,326	0.6%	34,665	5.5%
<b>Government</b>	178,838	178,750	0.0%	172,673	3.6%

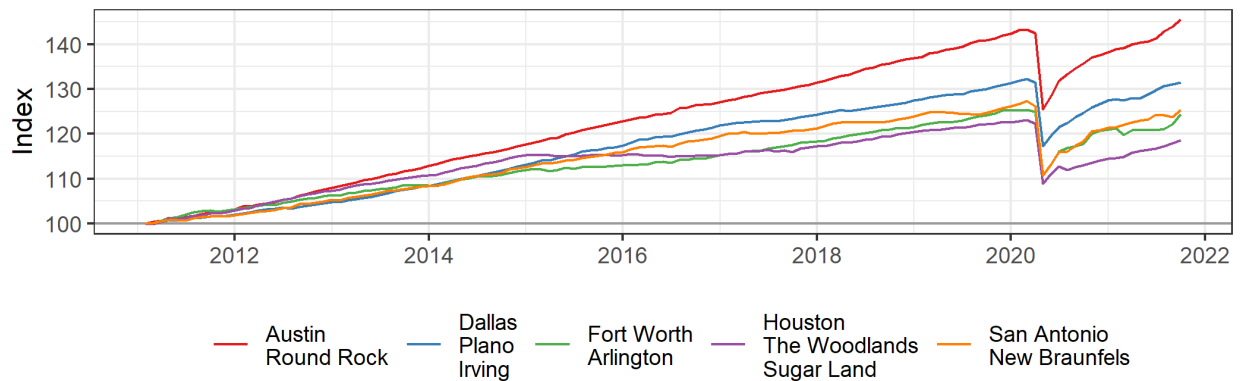
Sources: Texas Workforce Commission and Texas Real Estate Research Center at Texas A&M University

Figure 1  
Major Metro Employment Growth



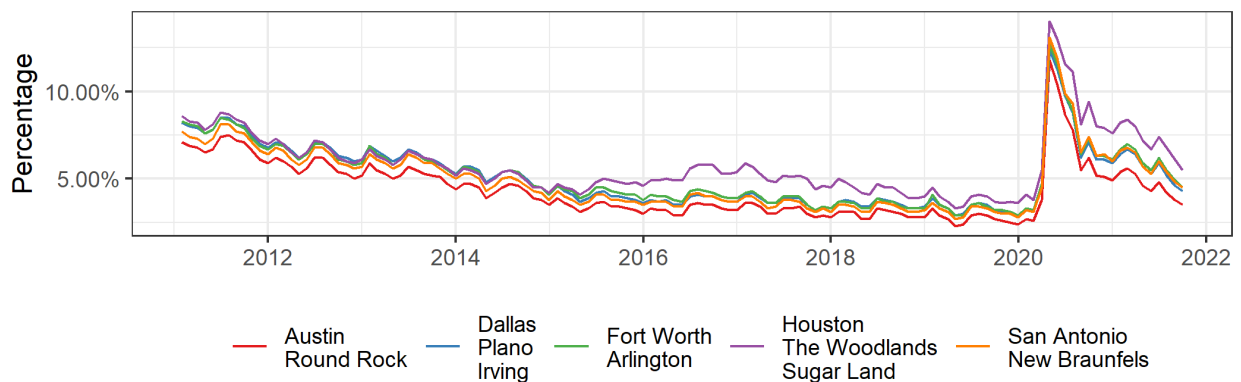
Sources: Texas Workforce Commission and Texas Real Estate Research Center at Texas A&M University

Figure 2  
Major Metro Employment Index



Sources: Texas Workforce Commission and Texas Real Estate Research Center at Texas A&M University

Figure 3  
Major Metro Unemployment Rate



Sources: Texas Workforce Commission and Texas Real Estate Research Center at Texas A&M University

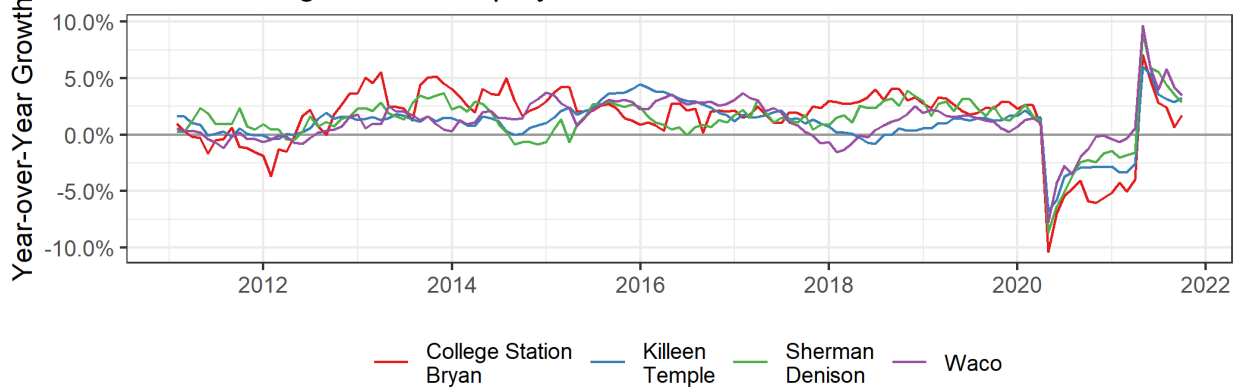


**Table 15**

<b>Texas Triangle Metro Nonfarm Seasonally Adjusted Employees</b>					
<b>Industry Title</b>	<b>October 2021</b>	<b>Last Month</b>		<b>Last Year</b>	
		<b>Employed</b>	<b>Percent Change</b>	<b>Employed</b>	<b>Percent Change</b>
<b>Total Nonagricultural</b>	441,812	439,334	0.6%	428,329	3.1%
<b>Total Private</b>	332,311	330,138	0.7%	318,731	4.3%
<b>Goods Producing</b>	59,372	59,022	0.6%	57,590	3.1%
<b>Mining, Logging and Construction</b>	26,100	26,029	0.3%	24,515	6.5%
<b>Manufacturing</b>	33,302	33,215	0.3%	33,098	0.6%
<b>Service Providing</b>	382,326	380,157	0.6%	370,639	3.2%
<b>Trade, Transportation and Utilites</b>	77,359	76,545	1.1%	75,164	2.9%
<b>Information</b>	3,597	3,561	1.0%	3,604	-0.2%
<b>Financial Activities</b>	20,137	20,126	0.1%	19,433	3.6%
<b>Professional and Business Services</b>	42,730	42,592	0.3%	39,938	7.0%
<b>Education and Health Services</b>	67,564	68,447	-1.3%	66,361	1.8%
<b>Leisure and Hospitality</b>	49,290	47,867	3.0%	44,568	10.6%
<b>Other Services</b>	11,862	11,928	-0.6%	11,660	1.7%
<b>Government</b>	109,346	109,153	0.2%	109,463	-0.1%

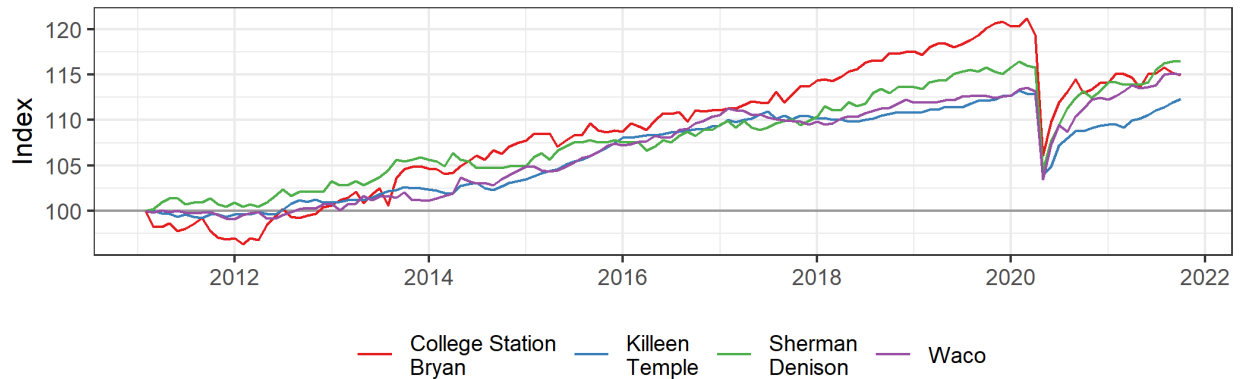
Sources: Texas Workforce Commission and Texas Real Estate Research Center at Texas A&M University

Figure 4  
Texas Triangle Metro Employment Growth



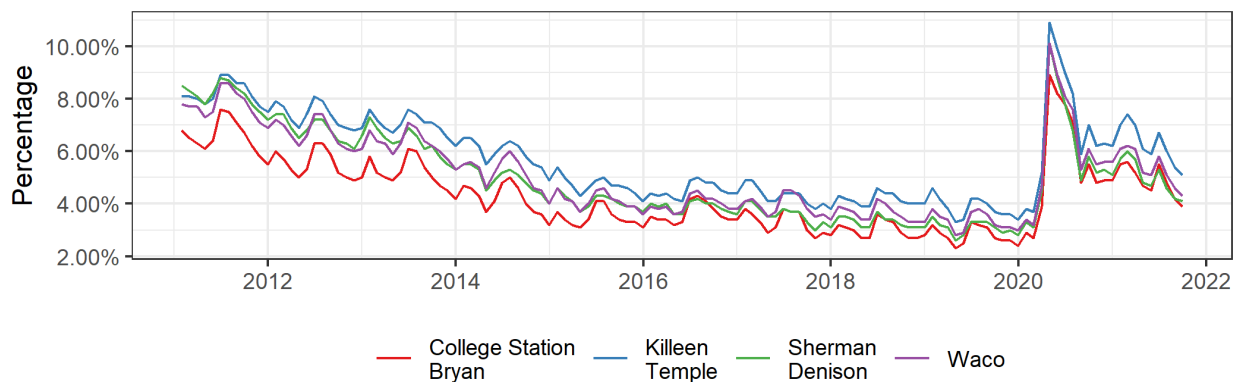
Sources: Texas Workforce Commission and Texas Real Estate Research Center at Texas A&M University

Figure 5  
Texas Triangle Metro Employment Index



Sources: Texas Workforce Commission and Texas Real Estate Research Center at Texas A&M University

Figure 6  
Texas Triangle Metro Unemployment Rate



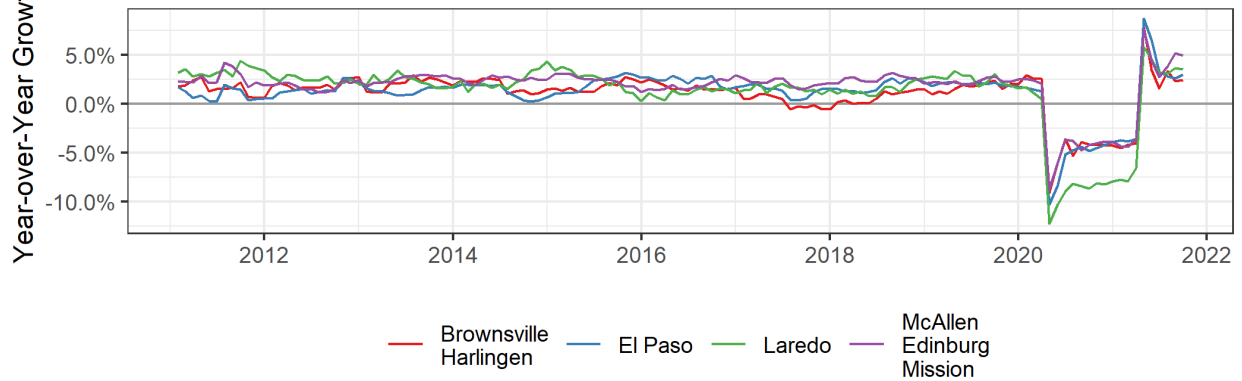
Sources: Texas Workforce Commission and Texas Real Estate Research Center at Texas A&M University

**Table 16**

<b>Border Metro Nonfarm Seasonally Adjusted Employees</b>					
<b>Industry Title</b>	<b>October 2021</b>	<b>Last Month</b>		<b>Last Year</b>	
		<b>Employed</b>	<b>Percent Change</b>	<b>Employed</b>	<b>Percent Change</b>
<b>Total Nonagricultural</b>	842,254	842,661	0.0%	812,691	3.6%
<b>Total Private</b>	657,667	656,352	0.2%	632,161	4.0%
<b>Goods Producing</b>	61,313	61,343	0.0%	61,223	0.1%
<b>Mining, Logging and Construction</b>	32,069	32,221	-0.5%	31,366	2.2%
<b>Manufacturing</b>	29,167	29,150	0.1%	29,778	-2.1%
<b>Service Providing</b>	780,864	781,036	0.0%	751,390	3.9%
<b>Trade, Transportation and Utilities</b>	178,507	177,681	0.5%	171,324	4.2%
<b>Information</b>	8,587	8,649	-0.7%	8,087	6.2%
<b>Financial Activities</b>	30,815	30,688	0.4%	29,922	3.0%
<b>Professional and Business Services</b>	79,419	79,155	0.3%	77,015	3.1%
<b>Education and Health Services</b>	191,499	193,136	-0.8%	184,621	3.7%
<b>Leisure and Hospitality</b>	88,423	87,711	0.8%	81,547	8.4%
<b>Other Services</b>	19,144	19,123	0.1%	18,448	3.8%
<b>Government</b>	183,880	186,228	-1.3%	179,919	2.2%

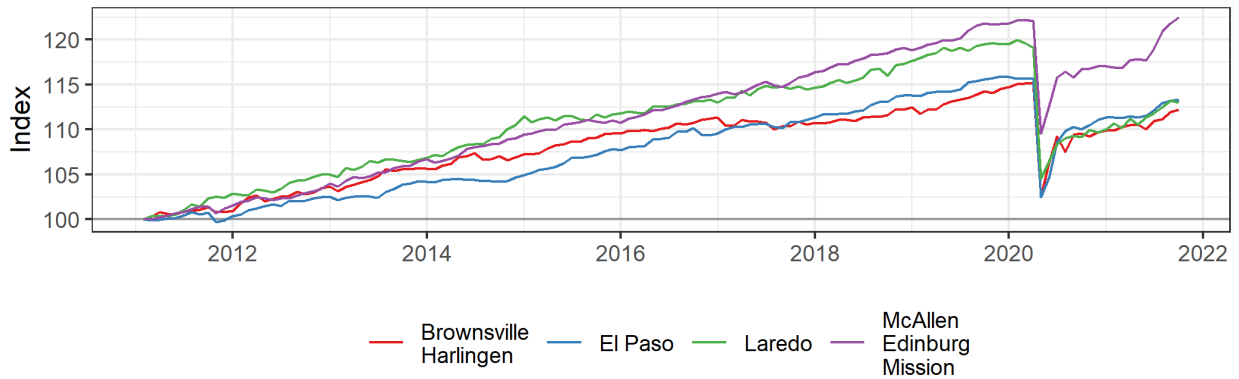
Sources: Texas Workforce Commission and Texas Real Estate Research Center at Texas A&M University

Figure 7  
Border Metro Employment Growth



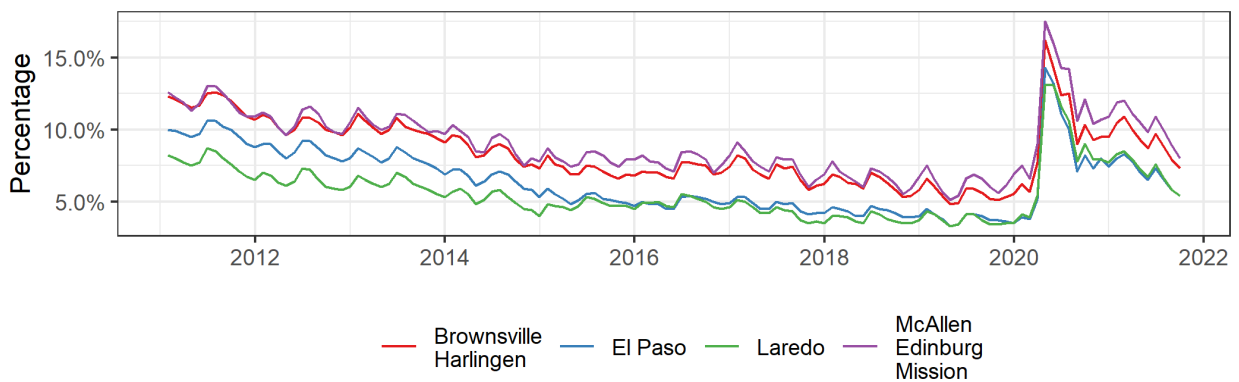
Sources: Texas Workforce Commission and Texas Real Estate Research Center at Texas A&M University

Figure 8  
Border Metro Employment Index



Sources: Texas Workforce Commission and Texas Real Estate Research Center at Texas A&M University

Figure 9  
Border Metro Unemployment Rate



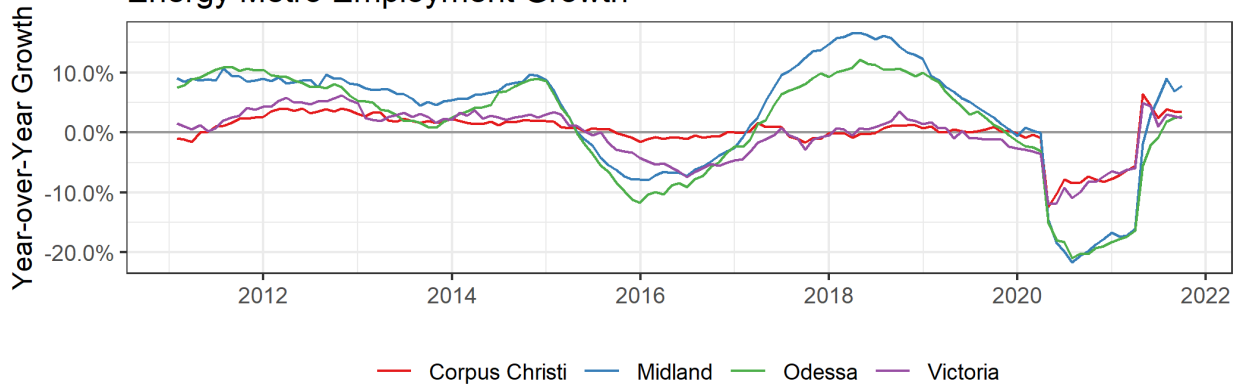
Sources: Texas Workforce Commission and Texas Real Estate Research Center at Texas A&M University

**Table 17**

<b>Energy Metro Nonfarm Seasonally Adjusted Employees</b>					
<b>Industry Title</b>	<b>October 2021</b>	<b>Last Month</b>		<b>Last Year</b>	
		<b>Employed</b>	<b>Percent Change</b>	<b>Employed</b>	<b>Percent Change</b>
<b>Total Nonagricultural</b>	395,318	391,673	0.9%	379,265	4.2%
<b>Total Private</b>	333,441	329,733	1.1%	317,453	5.0%
<b>Goods Producing</b>	81,919	82,187	-0.3%	78,122	4.9%
<b>Mining, Logging and Construction</b>	65,180	65,548	-0.6%	61,547	5.9%
<b>Manufacturing</b>	16,472	16,368	0.6%	16,300	1.1%
<b>Service Providing</b>	311,055	309,564	0.5%	298,936	4.1%
<b>Trade, Transportation and Utilites</b>	80,497	79,968	0.7%	77,226	4.2%
<b>Information</b>	2,966	3,016	-1.6%	2,962	0.1%
<b>Financial Activities</b>	17,787	17,771	0.1%	16,997	4.6%
<b>Professional and Business Services</b>	33,222	34,013	-2.3%	32,138	3.4%
<b>Education and Health Services</b>	49,476	49,466	0.0%	49,078	0.8%
<b>Leisure and Hospitality</b>	50,657	49,784	1.8%	44,871	12.9%
<b>Other Services</b>	14,172	14,028	1.0%	13,477	5.2%
<b>Government</b>	62,013	62,031	0.0%	61,915	0.2%

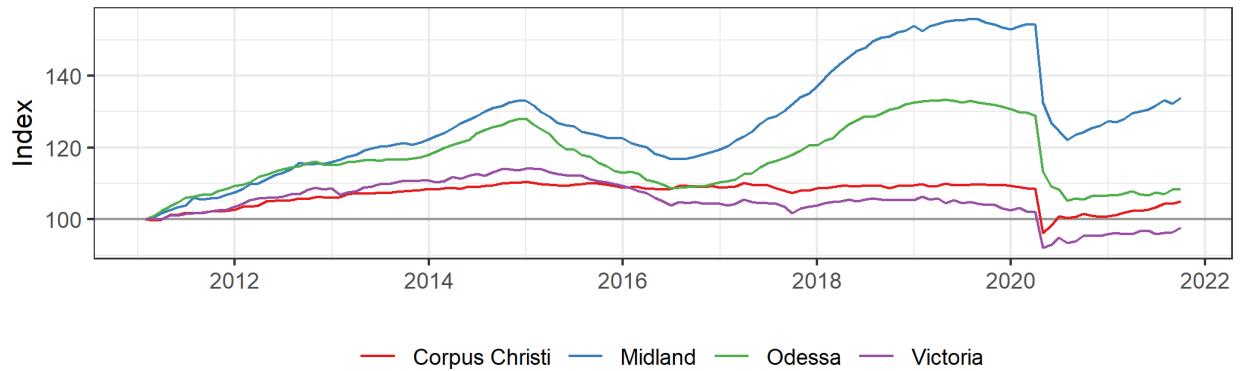
Sources: Texas Workforce Commission and Texas Real Estate Research Center at Texas A&M University

Figure 10  
Energy Metro Employment Growth



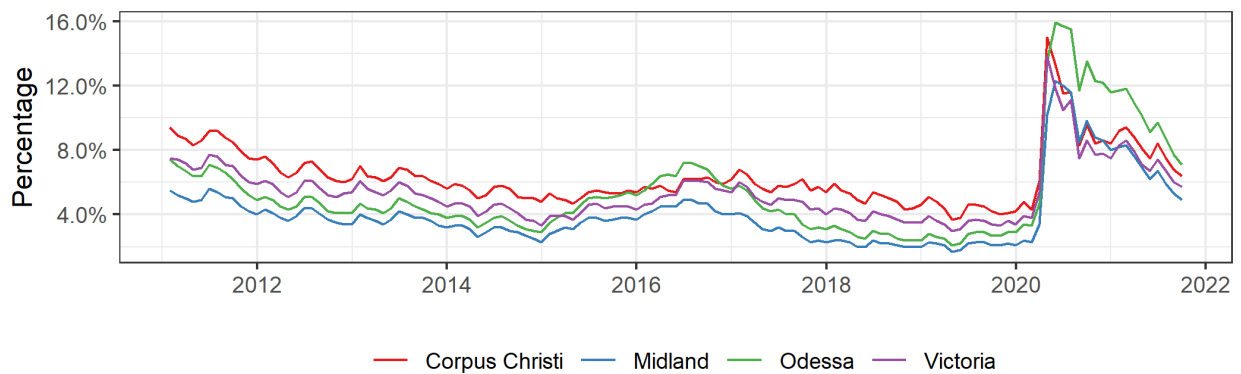
Sources: Texas Workforce Commission and Texas Real Estate Research Center at Texas A&M University

Figure 11  
Energy Metro Employment Index



Sources: Texas Workforce Commission and Texas Real Estate Research Center at Texas A&M University

Figure 12  
Energy Metro Unemployment Rate



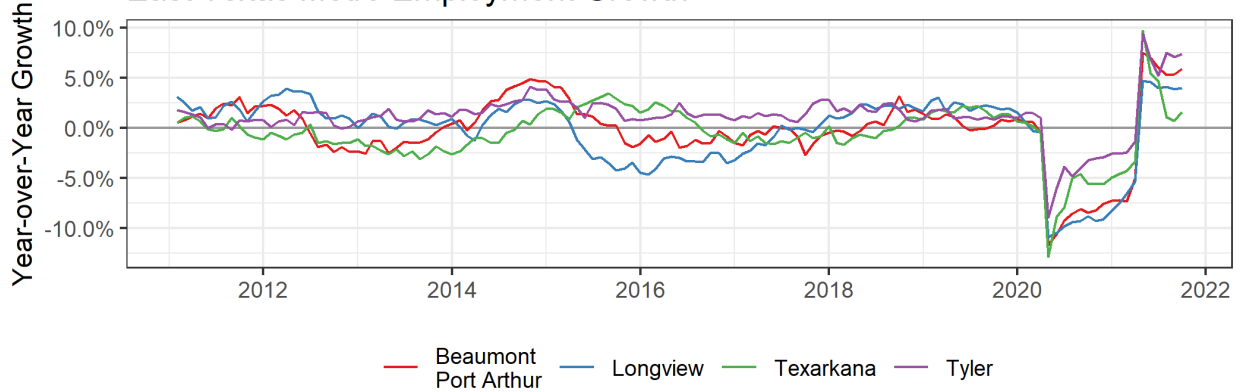
Sources: Texas Workforce Commission and Texas Real Estate Research Center at Texas A&M University

**Table 18**

<b>East Texas Metro Nonfarm Seasonally Adjusted Employees</b>					
<b>Industry Title</b>	<b>October 2021</b>	<b>Last Month</b>		<b>Last Year</b>	
		<b>Employed</b>	<b>Percent Change</b>	<b>Employed</b>	<b>Percent Change</b>
<b>Total Nonagricultural</b>	426,030	424,537	0.4%	406,461	4.8%
<b>Total Private</b>	360,926	358,979	0.5%	342,366	5.4%
<b>Goods Producing</b>	84,669	84,073	0.7%	76,943	10.0%
<b>Mining, Logging and Construction</b>	40,429	40,154	0.7%	35,976	12.4%
<b>Manufacturing</b>	44,180	43,855	0.7%	40,905	8.0%
<b>Service Providing</b>	340,727	340,237	0.1%	328,946	3.6%
<b>Trade, Transportation and Utilites</b>	89,803	88,737	1.2%	86,676	3.6%
<b>Information</b>	3,524	3,553	-0.8%	3,423	3.0%
<b>Financial Activities</b>	16,641	16,618	0.1%	16,536	0.6%
<b>Professional and Business Services</b>	38,858	38,567	0.8%	35,987	8.0%
<b>Education and Health Services</b>	69,812	69,898	-0.1%	68,907	1.3%
<b>Leisure and Hospitality</b>	43,877	43,499	0.9%	40,476	8.4%
<b>Other Services</b>	13,580	13,940	-2.6%	13,291	2.2%
<b>Government</b>	65,080	65,696	-0.9%	64,067	1.6%

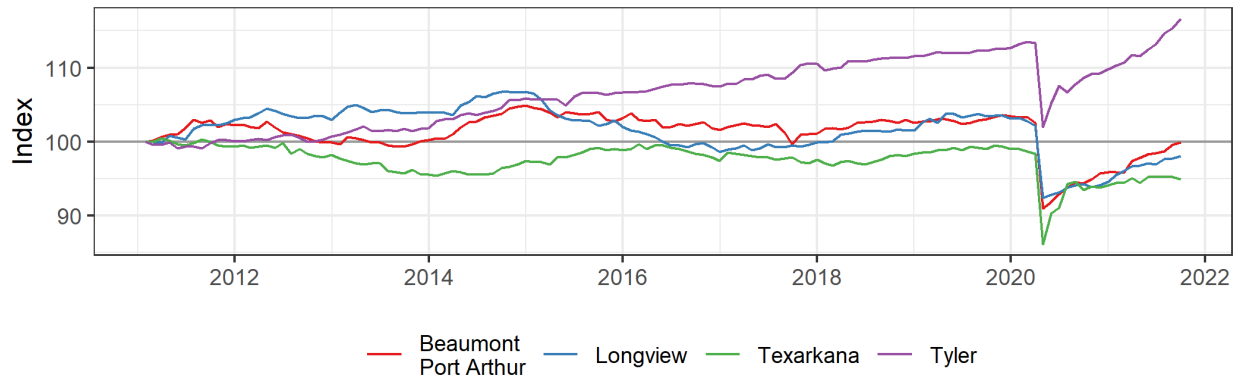
Sources: Texas Workforce Commission and Texas Real Estate Research Center at Texas A&M University

Figure 13  
East Texas Metro Employment Growth



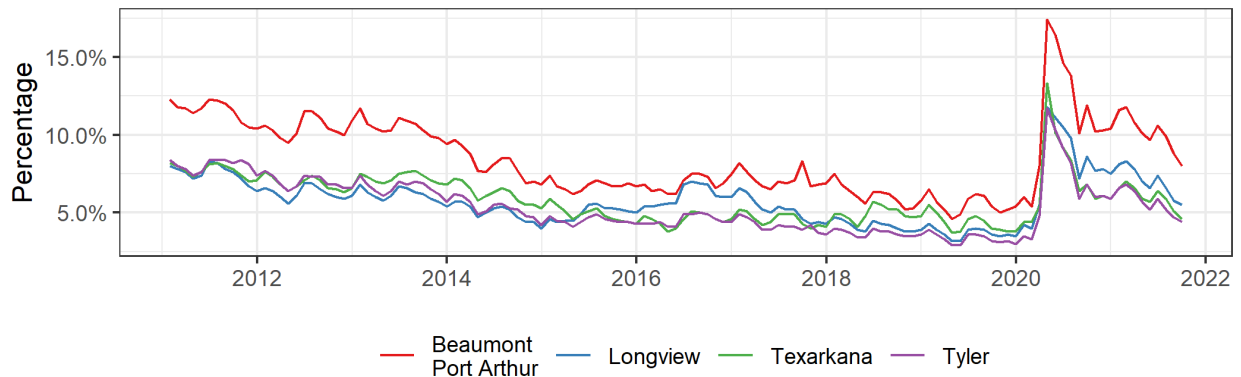
Sources: Texas Workforce Commission and Texas Real Estate Research Center at Texas A&M University

Figure 14  
East Texas Metro Employment Index



Sources: Texas Workforce Commission and Texas Real Estate Research Center at Texas A&M University

Figure 15  
East Texas Metro Unemployment Rate



Sources: Texas Workforce Commission and Texas Real Estate Research Center at Texas A&M University

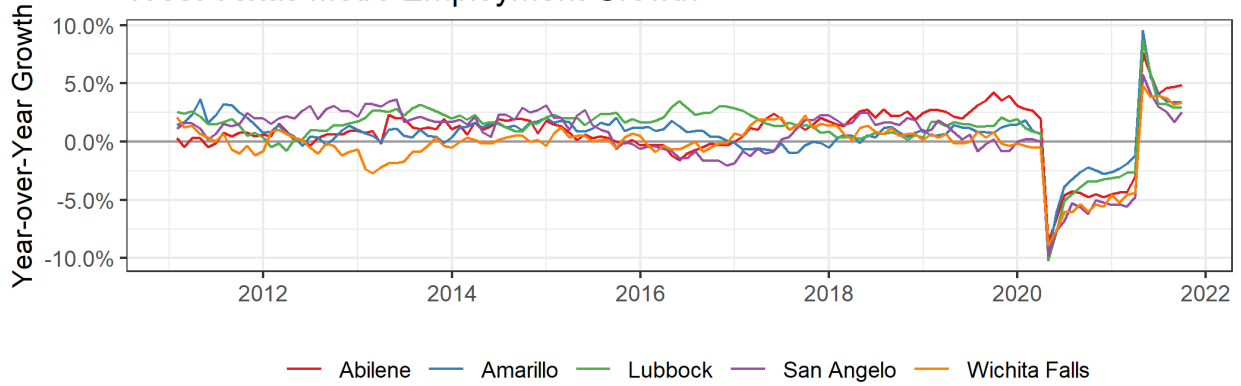


**Table 19**

<b>West Texas Metro Nonfarm Seasonally Adjusted Employees</b>					
<b>Industry Title</b>	<b>October 2021</b>	<b>Last Month</b>		<b>Last Year</b>	
		<b>Employed</b>	<b>Percent Change</b>	<b>Employed</b>	<b>Percent Change</b>
<b>Total Nonagricultural</b>	453,862	453,014	0.2%	438,710	3.5%
<b>Total Private</b>	364,130	362,921	0.3%	349,763	4.1%
<b>Goods Producing</b>	57,346	57,302	0.1%	56,554	1.4%
<b>Mining, Logging and Construction</b>	26,945	26,928	0.1%	26,846	0.4%
<b>Manufacturing</b>	30,381	30,207	0.6%	29,682	2.4%
<b>Service Providing</b>	396,500	395,677	0.2%	382,142	3.8%
<b>Trade, Transportation and Utilites</b>	90,662	91,297	-0.7%	88,452	2.5%
<b>Information</b>	6,045	6,162	-1.9%	6,143	-1.6%
<b>Financial Activities</b>	23,938	23,841	0.4%	23,644	1.2%
<b>Professional and Business Services</b>	39,356	38,792	1.5%	36,053	9.2%
<b>Education and Health Services</b>	73,866	73,525	0.5%	72,280	2.2%
<b>Leisure and Hospitality</b>	55,558	54,303	2.3%	50,353	10.3%
<b>Other Services</b>	17,992	17,798	1.1%	16,890	6.5%
<b>Government</b>	89,917	89,928	0.0%	89,107	0.9%

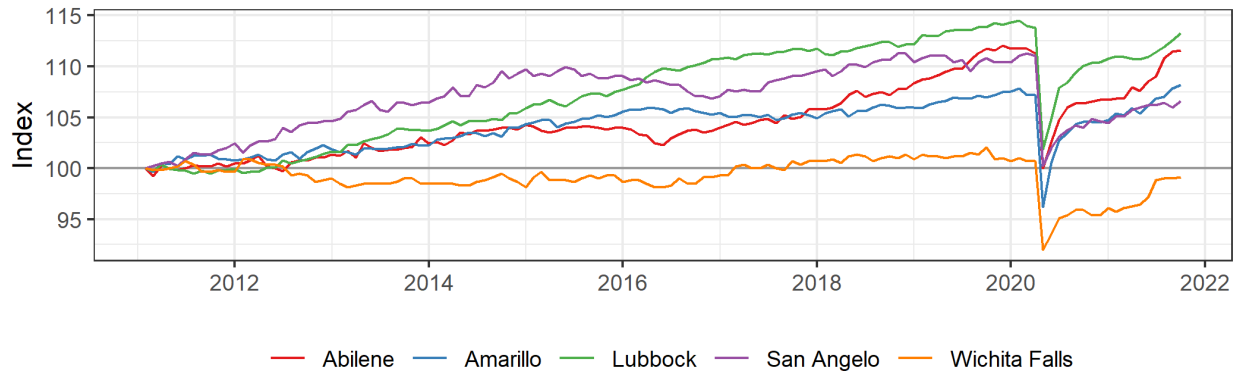
Sources: Texas Workforce Commission and Texas Real Estate Research Center at Texas A&M University

Figure 16  
West Texas Metro Employment Growth



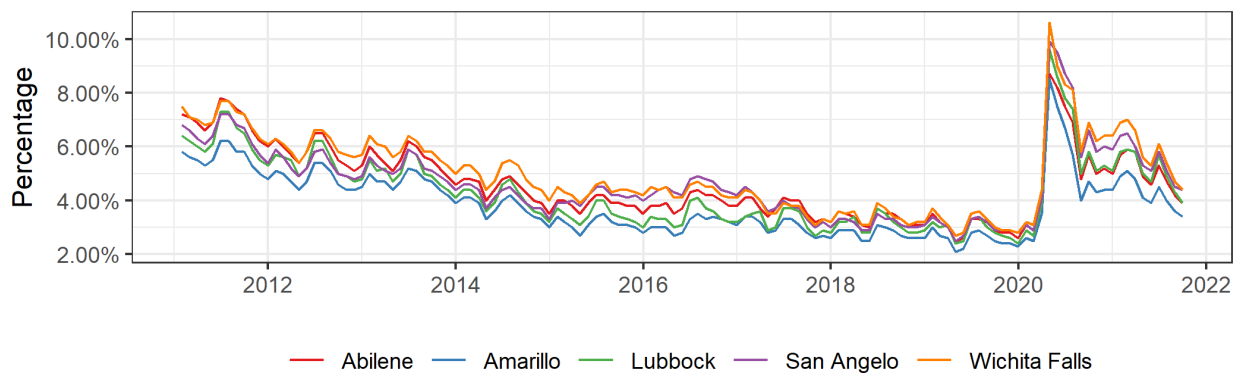
Sources: Texas Workforce Commission and Texas Real Estate Research Center at Texas A&M University

Figure 17  
West Texas Metro Employment Index



Sources: Texas Workforce Commission and Texas Real Estate Research Center at Texas A&M University

Figure 18  
West Texas Metro Unemployment Rate



Sources: Texas Workforce Commission and Texas Real Estate Research Center at Texas A&M University



TEXAS A&M UNIVERSITY

Texas Real Estate Research Center



MAYS BUSINESS SCHOOL

Texas A&M University  
2115 TAMU  
College Station, TX 77843-2115

<http://recenter.tamu.edu>  
979-845-2031

**EXECUTIVE DIRECTOR**

GARY W. MALER

**ADVISORY COMMITTEE**

RUSSELL CAIN, CHAIRMAN  
Port Lavaca

DOUG JENNINGS, VICE CHAIRMAN  
Fort Worth

TROY ALLEY      BESA MARTIN  
DeSoto          Boerne

DOUG FOSTER      TED NELSON  
Lockhart          Houston

VICKI FULLERTON      BECKY VAJDAK  
The Woodlands      Temple

PATRICK GEDDES      BARBARA RUSSELL, EX-OFFICIO  
Dallas              Denton



**LinkedIn**  
[linkedin.com/company/recentertx](https://www.linkedin.com/company/recentertx)



**Instagram**  
[@recentertx](https://www.instagram.com/recentertx)



**YouTube**  
[YouTube.com/realestatecenter](https://www.youtube.com/realestatecenter)



**Facebook**  
[@recentertx](https://www.facebook.com/recentertx)



**Twitter**  
[@recentertx](https://www.twitter.com/recentertx)