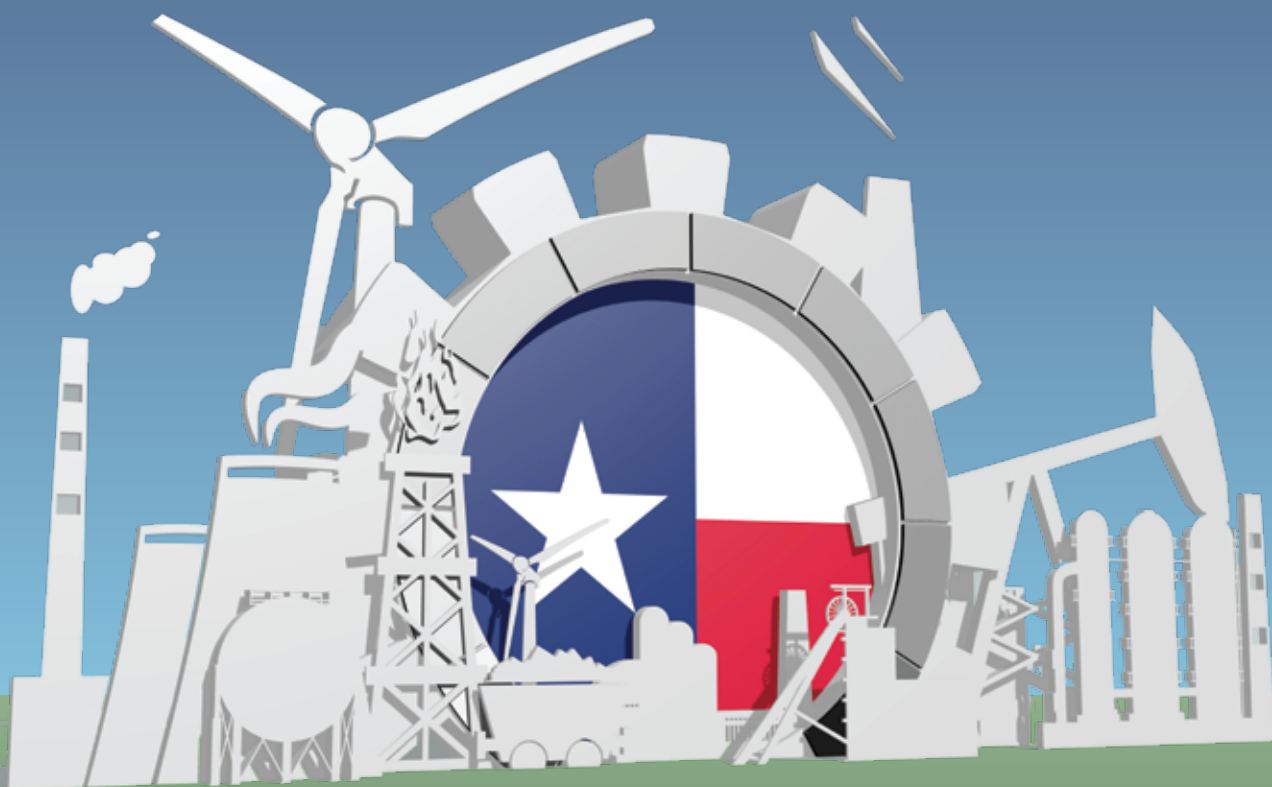


Texas Employment Report



TEXAS A&M UNIVERSITY

Texas Real Estate Research Center ^{EST. 1971} 5

Luis B. Torres, Research Economist
Joshua Roberson, Senior Data Analyst

TECHNICAL REPORT

2303

November 2021 Data

TR



November 2021 Summary

NONFARM EMPLOYMENT	UNEMPLOYMENT RATE	MINING AND LOGGING	FINANCIAL ACTIVITIES	PROFESSIONAL AND BUSINESS SERVICES
▲ 0.6% MOM	▼ 5.2%	▲ 1.9%	▲ 1.1% MOM	▲ 1.2% MOM

- Texas added 75,100 jobs in November, a 0.6 percent increase over October. It exceeded the nation's growth rate of 0.1 percent.
- The state has gained jobs in 18 of the last 19 months.
- Due to the jobs gained during November, the Texas economy has recovered the jobs lost due to the pandemic and is now 28,200 jobs above the February 2020 employment level. It took Texas 19 months to recover the jobs lost due to the pandemic.
- Texas' unemployment rate fell to 5.2 percent in November, down 0.2 percentage points from 5.4 percent the previous month. The state had a higher unemployment rate than the nation's 4.2 percent. The unemployment rate is getting closer to its pre-pandemic level of 3.7 percent.
- The states' labor force increased by 49,662 from October 2021 to November 2021, surpassing pre-pandemic levels.
- Record job openings suggest that while the economy is still short of pre-COVID employment levels, it is not due to insufficient labor demand.
 - Texas job openings reached 907,000 million in October, below July's record level of 928,000 job openings.
 - Job openings are higher than the number of unemployed for the fourth straight month (July to October), and they recorded the biggest gap between them.
- Childcare, the lingering pandemic, early retirement, and the possibility that people are rethinking their career paths could be affecting the transition from unemployment to employment.
- The labor force participation rate improved slightly in November 2021, increasing to 62.6 percent. It reached a trough during 2Q2021 and is slowly increasing.
- The state's goods-producing sector added 9,000 jobs from October 2021 to November 2021. Mining and logging registered the biggest gain, adding 3,700 jobs. Construction and manufacturing industries also registered job growth, gaining 3,600 and 1,700 jobs, respectively.
- The state's service-providing sector added 66,100 jobs from October 2021 to November 2021. The biggest job gains over the month were in professional and business services (22,900 jobs); trade, leisure, and hospitality (12,500 jobs); and financial activities (9,300 jobs).

- Transportation, warehousing, and utilities; financial activities; professional business services; wholesale trade; and retail trade are the only sectors that recovered all jobs lost due to the pandemic.
- Tyler registered the highest annual growth rate of all Texas Metropolitan Statistical Areas (MSA) from November 2020 to November 2021.*
- Austin-Round Rock registered the highest annual growth rate of Texas' four major MSAs from November 2020 to November 2021. The metro benefited from its substantial high-tech sector, which can socially distance and has prospered during the pandemic.*
- McAllen-Edinburg-Mission registered the highest annual growth rate of Texas' four major border MSAs from November 2020 to November 2021.*
- Dallas-Fort Worth-Arlington joined Abilene, Amarillo, Austin, Killeen-Temple, Lubbock, McAllen-Edinburg-Mission, Sherman-Denison, Tyler, and Waco as the only metropolitan areas to have recovered all jobs lost due to the pandemic.
- MSAs' oil-related job recovery is lagging the rest of the state, particularly in Midland and Odessa.
- Government employment increased monthly and annually during November 2021. The monthly increase was a result of increases in both federal and state government employment.

* Analysis based on nonseasonally adjusted data.

Table 1
Texas and U.S. Labor Markets

NonFarm Employment	November 2021	November 2020	Change	
			Absolute	Percent
Texas	12,998,200	12,299,500	698,700	5.7
United States	148,611,000	142,809,000	5,802,000	4.1

Private Employment	November 2021	November 2020	Absolute	Percent
United States	126,711,000	121,321,000	5,390,000	4.4

Labor Participation	November 2021		Unemployment Rate, Percent	
	Labor Force	Unemployed	November 2021	November 2020
Texas	14,253,815	742,218	5.2	7.2
United States	162,052,000	6,877,000	4.2	6.7

Sources: Texas Workforce Commission and U.S. Bureau of Labor Statistics

Table 2
Texas Industries and Government Sector Ranked by Employment Growth Rate

Rank	Industry	November 2021	November 2020	Change	%Change
1	Mining and Logging	203,400	173,200	30,200	17.44
2	Professional and Business Services	1,979,900	1,779,100	200,800	11.29
3	Leisure and Hospitality	1,336,400	1,203,300	133,100	11.06
4	Other Services	429,400	396,800	32,600	8.22
5	Information	208,400	195,400	13,000	6.65
6	Trade	1,966,000	1,875,800	90,200	4.81
7	Transportation, Warehousing, Utilities	658,700	628,900	29,800	4.74
8	Financial Activities	848,300	811,300	37,000	4.56
9	Education and Health Services	1,761,200	1,696,400	64,800	3.82
10	Manufacturing	886,900	855,400	31,500	3.68
11	Construction	738,100	723,800	14,300	1.98
12	Government	1,981,500	1,960,100	21,400	1.09

Sources: Texas Workforce Commission and Texas Real Estate Research Center at Texas A&M University

Note: Analysis based on nonseasonally adjusted data

Table 3
Texas Industries' and Government's Shares of Employment

Rank	Industry	November	November
		2021	2020
		Percent	Percent
1	Government	15.24	15.94
2	Professional and Business Services	15.23	14.46
3	Trade	15.13	15.25
4	Education and Health Services	13.55	13.79
5	Leisure and Hospitality	10.28	9.78
6	Manufacturing	6.82	6.95
7	Financial Activities	6.53	6.60
8	Construction	5.68	5.88
9	Transportation, Warehousing, Utilities	5.07	5.11
10	Other Services	3.30	3.23
11	Information	1.60	1.59
12	Mining and Logging	1.56	1.41
Total		100.00	100.00

Sources: Texas Workforce Commission and Texas Real Estate Research Center at Texas A&M University

Note: Components may not add up to totals due to rounding

Table 4
Contributions of Texas Industries and the Government Sector to Texas Employment Growth Rate

Rank	Industry	November	November
		2021	2020
		Percent	Percent
1	Professional and Business Services	1.6326	-0.2979
2	Leisure and Hospitality	1.0822	-1.6100
3	Trade	0.7334	-0.4704
4	Education and Health Services	0.5269	-0.5083
5	Financial Activities	0.3008	-0.0039
6	Other Services	0.2651	-0.4054
7	Manufacturing	0.2561	-0.4317
8	Mining and Logging	0.2455	-0.5060
9	Transportation, Warehousing, Utilities	0.2423	0.2321
10	Government	0.1740	-0.2530
11	Construction	0.1163	-0.4665
12	Information	0.1057	-0.1238
Total		5.6807	-4.8446

Sources: Texas Workforce Commission and Texas Real Estate Research Center at Texas A&M University

Note: Components may not add up to totals due to rounding

Table 5
Texas Metropolitan Areas Ranked by Employment Growth Rate

Rank	Metropolitan Area	November 2021	November 2020	Change	% Change
1	Tyler	113.6	105.1	8.5	8.1
2	Austin-Round Rock	1182.4	1099.5	82.9	7.5
3	Midland	99.4	92.8	6.6	7.1
4	Dallas-Plano-Irving	2789.5	2640.5	149	5.6
5	McAllen-Edinburg-Mission	276.8	262.8	14	5.3
6	Abilene	73.5	70	3.5	5.0
7	Odessa	70.8	67.6	3.2	4.7
8	Houston-The Woodlands-Sugar Land	3102.2	2963.4	138.8	4.7
9	San Antonio-New Braunfels	1091.2	1042.4	48.8	4.7
10	Beaumont-Port Arthur	160.5	153.4	7.1	4.6
11	Corpus Christi	186.4	178.2	8.2	4.6
12	Fort Worth-Arlington	1116.5	1067.4	49.1	4.6
13	Longview	94.5	90.9	3.6	4.0
14	Laredo	103.3	99.5	3.8	3.8
15	Waco	127.2	122.8	4.4	3.6
16	Amarillo	123	118.9	4.1	3.4
17	Killeen-Temple-Fort Hood	146.7	142.1	4.6	3.2
18	Sherman-Denison	49.6	48.1	1.5	3.1
19	Lubbock	150.5	146.4	4.1	2.8
20	Wichita Falls	57.5	56.1	1.4	2.5
21	Brownsville-Harlingen	143.4	140	3.4	2.4
22	El Paso	321.5	314.1	7.4	2.4
23	San Angelo	48.2	47.3	0.9	1.9
24	Texarkana	58.4	57.4	1	1.7
25	College Station-Bryan	119.5	117.6	1.9	1.6
26	Victoria	38.3	37.7	0.6	1.6
Micropolitan Texas		1153.8	1017.5	136.3	13.4

Sources: Texas Workforce Commission and Texas Real Estate Research Center at Texas A&M University

Note: Analysis based on nonseasonally adjusted data

Table 6
Texas Metropolitan and Micropolitan Shares of Total Texas Jobs

Rank	Metropolitan Area	November 2021 Percent	November 2020 Percent
1	Houston-The Woodlands-Sugar Land	23.8664	24.0937
2	Dallas-Plano-Irving	21.4607	21.4684
3	Austin-Round Rock	9.0966	8.9394
4	Fort Worth-Arlington	8.5897	8.6784
5	San Antonio-New Braunfels	8.3950	8.4751
6	El Paso	2.4734	2.5538
7	McAllen-Edinburg-Mission	2.1295	2.1367
8	Corpus Christi	1.4340	1.4488
9	Beaumont-Port Arthur	1.2348	1.2472
10	Lubbock	1.1579	1.1903
11	Killeen-Temple-Fort Hood	1.1286	1.1553
12	Brownsville-Harlingen	1.1032	1.1383
13	Waco	0.9786	0.9984
14	Amarillo	0.9463	0.9667
15	College Station-Bryan	0.9194	0.9561
16	Tyler	0.8740	0.8545
17	Laredo	0.7947	0.8090
18	Midland	0.7647	0.7545
19	Longview	0.7270	0.7391
20	Abilene	0.5655	0.5691
21	Odessa	0.5447	0.5496
22	Texarkana	0.4493	0.4667
23	Wichita Falls	0.4424	0.4561
24	Sherman-Denison	0.3816	0.3911
25	San Angelo	0.3708	0.3846
26	Victoria	0.2947	0.3065
Micropolitan Texas		8.8766	8.2727
Total		100.0000	100.0000

Sources: Texas Workforce Commission and Texas Real Estate Research Center at Texas A&M University

Note: Components may not add up to totals due to rounding

Table 7

Contributions of Texas Metropolitan and Micropolitan Areas to Total Texas Employment Growth Rate

Rank	Metropolitan Area	November 2021	November 2020
1	Dallas-Plano-Irving	1.2114	-0.6978
2	Houston-The Woodlands-Sugar Land	1.1285	-1.7330
3	Austin-Round Rock	0.6740	-0.2731
4	Fort Worth-Arlington	0.3992	-0.3071
5	San Antonio-New Braunfels	0.3968	-0.3265
6	McAllen-Edinburg-Mission	0.1138	-0.0812
7	Tyler	0.0691	-0.0248
8	Corpus Christi	0.0667	-0.1230
9	El Paso	0.0602	-0.1060
10	Beaumont-Port Arthur	0.0577	-0.0975
11	Midland	0.0537	-0.1555
12	Killeen-Temple-Fort Hood	0.0374	-0.0325
13	Waco	0.0358	-0.0008
14	Lubbock	0.0333	-0.0379
15	Amarillo	0.0333	-0.0263
16	Laredo	0.0309	-0.0689
17	Longview	0.0293	-0.0704
18	Abilene	0.0285	-0.0271
19	Brownsville-Harlingen	0.0276	-0.0472
20	Odessa	0.0260	-0.1222
21	College Station-Bryan	0.0154	-0.0542
22	Sherman-Denison	0.0122	-0.0062
23	Wichita Falls	0.0114	-0.0255
24	Texarkana	0.0081	-0.0263
25	San Angelo	0.0073	-0.0201
26	Victoria	0.0049	-0.0232
	Micropolitan Texas	1.1082	-0.3303
	Total	5.6807	-4.8446

Sources: Texas Workforce Commission and Texas Real Estate Research Center at Texas A&M University

Note: Components may not add up to totals due to rounding

Table 8
Texas Metropolitan Areas Ranked by Unemployment Rate
November 2021

Rank	Metropolitan Area	Unemployment Rate, %
1	Amarillo	3.1
2	Austin-Round Rock	3.2
3	College Station-Bryan	3.5
4	Lubbock	3.6
5	Abilene	3.7
6	Sherman-Denison	3.8
7	Dallas-Plano-Irving	3.9
8	Tyler	3.9
9	Waco	3.9
10	Fort Worth-Arlington	4.0
11	San Angelo	4.0
12	San Antonio-New Braunfels	4.1
13	Texarkana	4.2
14	Wichita Falls	4.2
15	Midland	4.5
16	Texas	4.5
17	Killeen-Temple-Fort Hood	4.8
18	El Paso	5.0
19	Laredo	5.0
20	Houston-The Woodlands-Sugar Land	5.1
21	Longview	5.1
22	Victoria	5.3
23	Corpus Christi	6.0
24	Odessa	6.3
25	Brownsville-Harlingen	6.9
26	Beaumont-Port Arthur	7.4
26	McAllen-Edinburg-Mission	7.7

Sources: Texas Workforce Commission and Texas Real Estate Research Center at Texas A&M University

Table 9
 Employment Growth or Decline Rates by Industry in Large Metropolitan Areas
 Annual Percentage Change from November 2020 to November 2021

Industry:	Largest Texas Metropolitan Areas					
	Houston	Dallas	San Antonio	Fort Worth	Austin	El Paso
Mining and Construction	2.78	0.48	-0.16	0.41	1.71	6.21
Manufacturing	2.40	3.82	2.57	0.50	1.57	-0.60
Trade, Transportation and Utilities	4.16	5.82	2.56	3.74	6.83	2.79
Information	1.39	2.48	2.75	-1.05	7.23	8.89
Financial Activities	1.53	1.42	3.05	1.61	8.19	0.75
Professional and Business Services	6.95	12.28	6.97	15.37	14.77	-2.91
Education and Health Services	6.24	2.82	0.69	4.90	6.72	4.25
Leisure and Hospitality	9.13	13.83	16.99	7.83	19.08	8.68
Other Services	16.83	6.01	5.44	16.10	8.41	4.94
Government	-0.12	1.01	4.36	1.09	-0.21	0.28

Sources: Texas Workforce Commission and Texas Real Estate Research Center at Texas A&M University

Table 10: Texas Nonfarm Seasonally Adjusted Employees

Industry Title	November 2021	Last Month		Last Year	
		Employed	Percent Change	Employed	Percent Change
Total Nonagricultural	12,998,200	12,923,100	0.6%	12,299,500	5.7%
Total Private	11,016,700	10,943,300	0.7%	10,339,400	6.6%
Goods Producing	1,828,400	1,819,400	0.5%	1,752,400	4.3%
Mining and Logging	203,400	199,700	1.9%	173,200	17.4%
Construction	738,100	734,500	0.5%	723,800	2.0%
Manufacturing	886,900	885,200	0.2%	855,400	3.7%
Service Providing	11,169,800	11,103,700	0.6%	10,547,100	5.9%
Trade, Transportation and Utilites	2,624,700	2,618,500	0.2%	2,504,700	4.8%
Information	208,400	207,200	0.6%	195,400	6.7%
Financial Activities	848,300	839,000	1.1%	811,300	4.6%
Professional and Business Services	1,979,900	1,957,000	1.2%	1,779,100	11.3%
Education and Health Services	1,761,200	1,752,200	0.5%	1,696,400	3.8%
Leisure and Hospitality	1,336,400	1,323,900	0.9%	1,203,300	11.1%
Other Services	429,400	426,100	0.8%	396,800	8.2%
Government	1,981,500	1,979,800	0.1%	1,960,100	1.1%

Sources: Texas Workforce Commission and Texas Real Estate Research Center at Texas A&M University

Table 11: Austin-Round Rock Nonfarm Seasonally Adjusted Employees

Industry Title	November 2021	Last Month		Last Year	
		Employed	Percent Change	Employed	Percent Change
Total Nonagricultural	1,183,054	1,172,726	0.9%	1,097,152	7.8%
Total Private	992,781	984,076	0.9%	906,688	9.5%
Goods Producing	136,304	135,947	0.3%	134,090	1.7%
Mining, Logging and Construction	70,732	70,309	0.6%	69,571	1.7%
Manufacturing	64,558	65,666	-1.7%	63,562	1.6%
Service Providing	1,046,936	1,036,345	1.0%	963,252	8.7%
Trade, Transportation and Utilites	201,686	202,178	-0.2%	188,555	7.0%
Information	42,291	42,123	0.4%	39,395	7.4%
Financial Activities	75,381	74,656	1.0%	69,686	8.2%
Professional and Business Services	229,086	226,727	1.0%	199,223	15.0%
Education and Health Services	132,597	132,715	-0.1%	124,212	6.8%
Leisure and Hospitality	127,516	125,610	1.5%	107,142	19.0%
Other Services	44,657	44,690	-0.1%	41,177	8.5%
Government	187,965	187,736	0.1%	188,445	-0.3%

Sources: Texas Workforce Commission and Texas Real Estate Research Center at Texas A&M University

Table 12: Dallas-Fort Worth-Arlington Nonfarm Seasonally Adjusted Employees

Industry Title	November 2021	Last Month		Last Year	
		Employed	Percent Change	Employed	Percent Change
Total Nonagricultural	3,899,007	3,862,799	0.9%	3,689,265	5.7%
Total Private	3,451,324	3,412,348	1.1%	3,245,823	6.3%
Goods Producing	508,263	506,206	0.4%	499,963	1.7%
Mining, Logging and Construction	221,959	218,481	1.6%	220,937	0.5%
Manufacturing	287,003	285,628	0.5%	279,630	2.6%
Service Providing	3,394,316	3,360,721	1.0%	3,192,547	6.3%
Trade, Transportation and Utilites	848,378	846,389	0.2%	805,862	5.3%
Information	79,630	79,266	0.5%	78,061	2.0%
Financial Activities	333,722	331,782	0.6%	328,962	1.4%
Professional and Business Services	711,006	701,910	1.3%	629,039	13.0%
Education and Health Services	462,905	456,491	1.4%	447,350	3.5%
Leisure and Hospitality	379,747	364,266	4.2%	339,876	11.7%
Other Services	126,158	123,767	1.9%	115,352	9.4%
Government	452,290	452,851	-0.1%	447,605	1.0%

Sources: Texas Workforce Commission and Texas Real Estate Research Center at Texas A&M University

Table 13: Houston-The Woodlands-Sugar Land Nonfarm Seasonally Adjusted Employees

Industry Title	November 2021	Last Month		Last Year	
		Employed	Percent Change	Employed	Percent Change
Total Nonagricultural	3,104,616	3,086,337	0.6%	2,962,308	4.8%
Total Private	2,694,688	2,676,147	0.7%	2,551,907	5.6%
Goods Producing	492,841	483,841	1.9%	480,225	2.6%
Mining, Logging and Construction	281,709	273,868	2.9%	273,904	2.8%
Manufacturing	212,673	211,003	0.8%	207,691	2.4%
Service Providing	2,612,260	2,601,269	0.4%	2,482,478	5.2%
Trade, Transportation and Utilities	642,487	638,939	0.6%	616,387	4.2%
Information	29,106	29,161	-0.2%	28,725	1.3%
Financial Activities	165,508	164,408	0.7%	163,042	1.5%
Professional and Business Services	511,916	510,963	0.2%	478,575	7.0%
Education and Health Services	419,701	417,088	0.6%	394,939	6.3%
Leisure and Hospitality	313,019	310,187	0.9%	287,255	9.0%
Other Services	120,654	118,721	1.6%	103,201	16.9%
Government	410,288	410,631	-0.1%	410,737	-0.1%

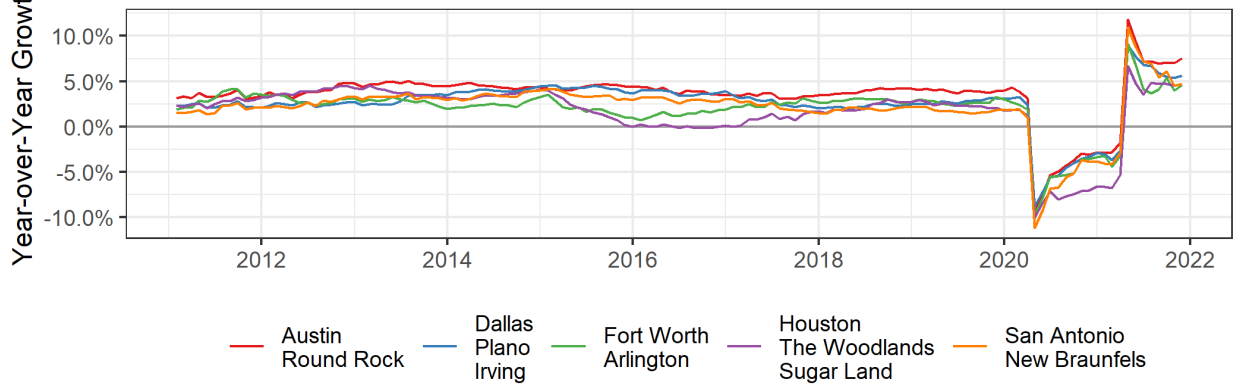
Sources: Texas Workforce Commission and Texas Real Estate Research Center at Texas A&M University

Table 14: San Antonio Nonfarm Seasonally Adjusted Employees

Industry Title	November 2021	Last Month		Last Year	
		Employed	Percent Change	Employed	Percent Change
Total Nonagricultural	1,090,967	1,087,191	0.3%	1,041,240	4.8%
Total Private	911,211	908,176	0.3%	869,070	4.8%
Goods Producing	113,585	114,701	-1.0%	112,376	1.1%
Mining, Logging and Construction	61,896	63,374	-2.3%	62,005	-0.2%
Manufacturing	51,564	51,667	-0.2%	50,260	2.6%
Service Providing	976,953	972,244	0.5%	928,463	5.2%
Trade, Transportation and Utilites	187,985	188,582	-0.3%	183,114	2.7%
Information	18,856	18,792	0.3%	18,365	2.7%
Financial Activities	97,715	97,284	0.4%	94,832	3.0%
Professional and Business Services	160,730	159,284	0.9%	150,150	7.0%
Education and Health Services	160,848	161,388	-0.3%	159,720	0.7%
Leisure and Hospitality	134,452	132,175	1.7%	115,393	16.5%
Other Services	36,647	36,555	0.3%	34,739	5.5%
Government	179,498	179,118	0.2%	171,936	4.4%

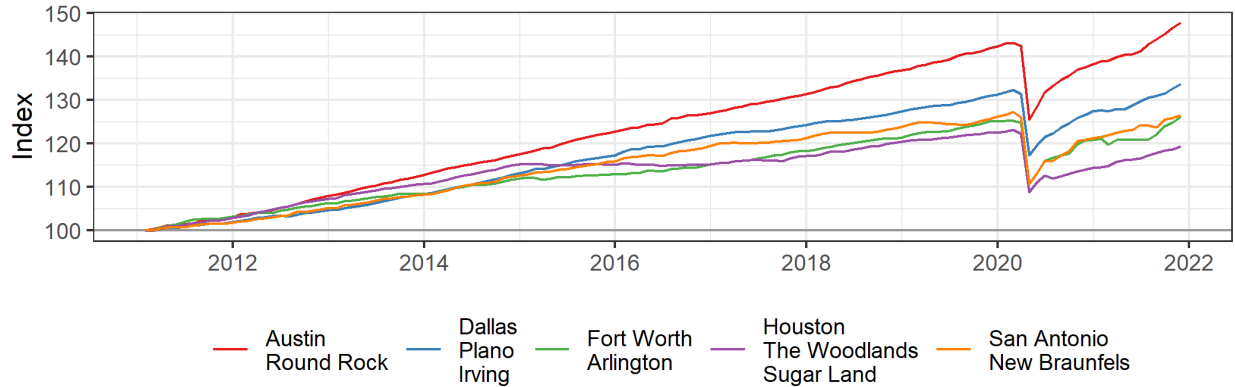
Sources: Texas Workforce Commission and Texas Real Estate Research Center at Texas A&M University

Figure 1: Major Metro Employment Growth



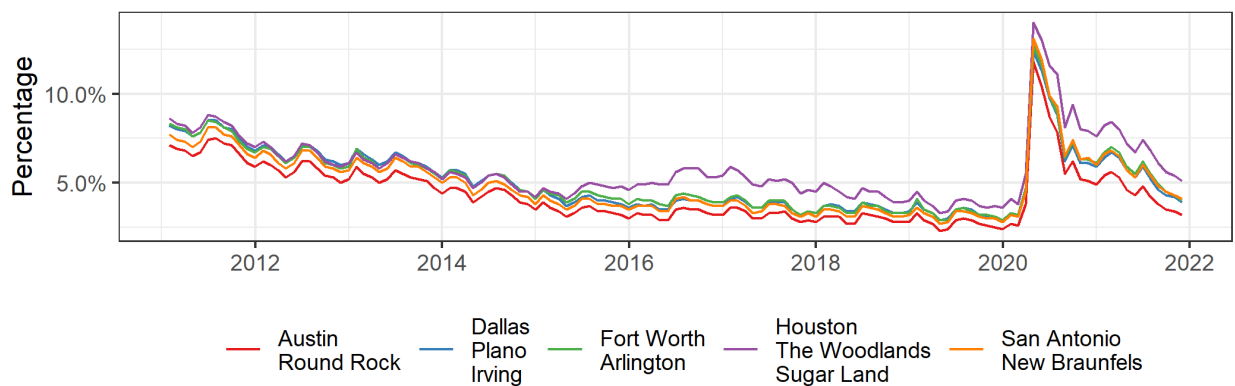
Sources: Texas Workforce Commission and Texas Real Estate Research Center at Texas A&M University

Figure 2: Major Metro Employment Index



Sources: Texas Workforce Commission and Texas Real Estate Research Center at Texas A&M University

Figure 3: Major Metro Unemployment Rate



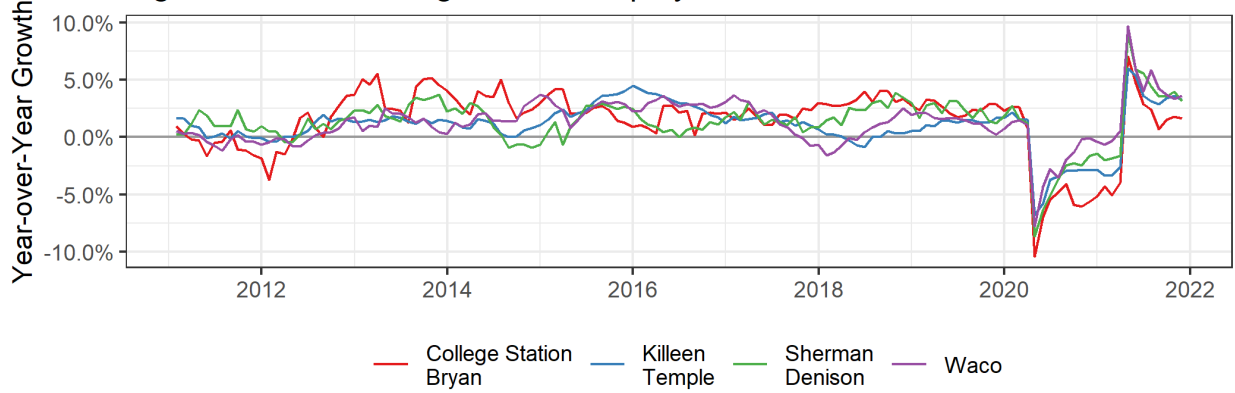
Sources: Texas Workforce Commission and Texas Real Estate Research Center at Texas A&M University

Table 15: Texas Triangle Metro Nonfarm Seasonally Adjusted Employees

Industry Title	November 2021	Last Month		Last Year	
		Employed	Percent Change	Employed	Percent Change
Total Nonagricultural	442,705	442,034	0.2%	429,308	3.1%
Total Private	332,373	332,095	0.1%	319,663	4.0%
Goods Producing	59,735	59,402	0.6%	57,462	4.0%
Mining, Logging and Construction	26,298	26,122	0.7%	24,615	6.8%
Manufacturing	33,487	33,321	0.5%	32,886	1.8%
Service Providing	382,782	382,407	0.1%	371,676	3.0%
Trade, Transportation and Utilites	76,888	76,976	-0.1%	75,304	2.1%
Information	3,604	3,608	-0.1%	3,706	-2.7%
Financial Activities	20,187	20,147	0.2%	19,385	4.1%
Professional and Business Services	42,734	42,765	-0.1%	40,339	5.9%
Education and Health Services	67,539	67,755	-0.3%	66,544	1.5%
Leisure and Hospitality	49,414	49,155	0.5%	44,986	9.8%
Other Services	11,965	11,865	0.8%	11,663	2.6%
Government	109,896	109,801	0.1%	109,227	0.6%

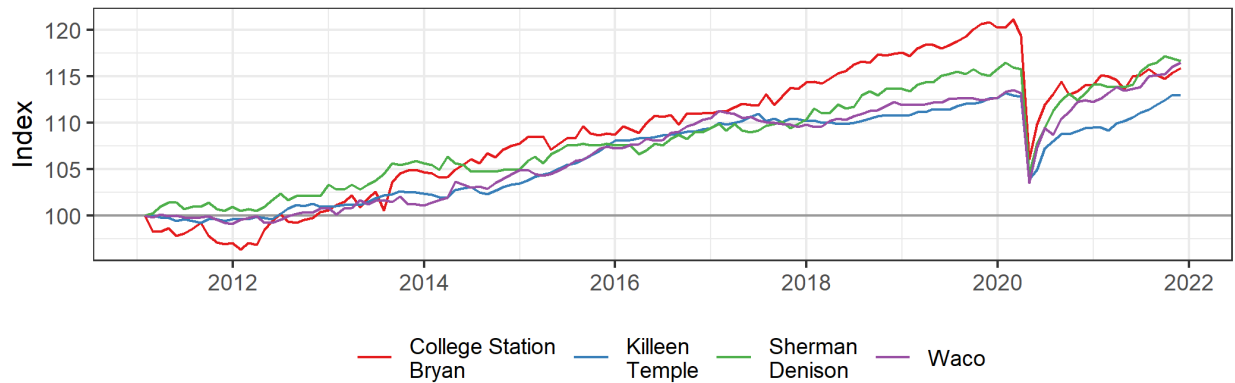
Sources: Texas Workforce Commission and Texas Real Estate Research Center at Texas A&M University

Figure 4: Texas Triangle Metro Employment Growth



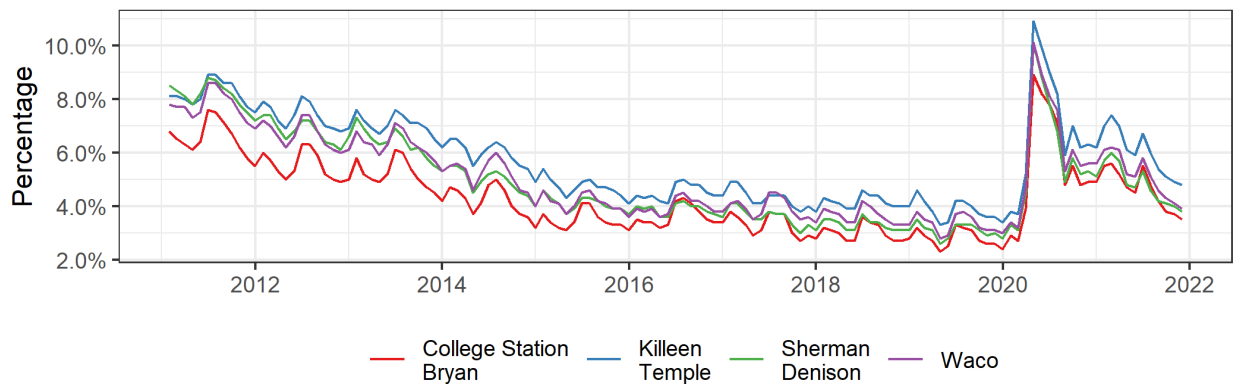
Sources: Texas Workforce Commission and Texas Real Estate Research Center at Texas A&M University

Figure 5: Texas Triangle Metro Employment Index



Sources: Texas Workforce Commission and Texas Real Estate Research Center at Texas A&M University

Figure 6: Texas Triangle Metro Unemployment Rate



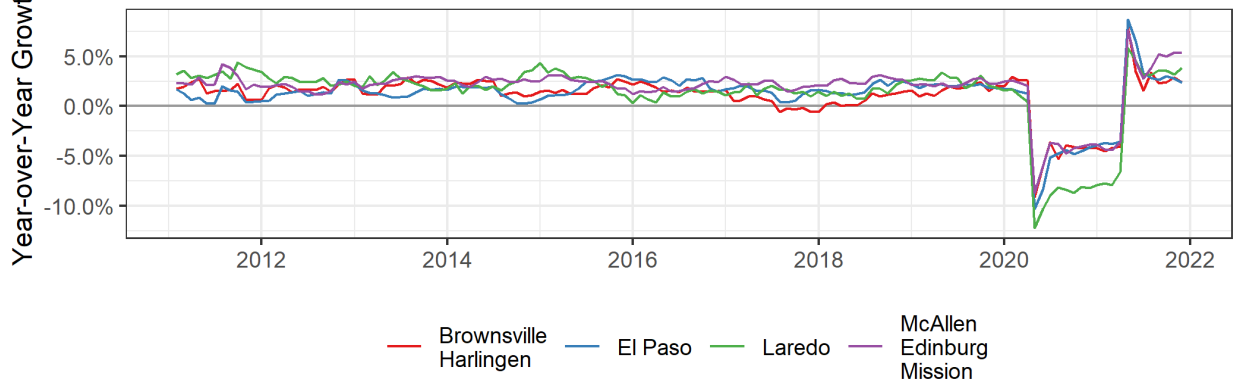
Sources: Texas Workforce Commission and Texas Real Estate Research Center at Texas A&M University

Table 16: Border Metro Nonfarm Seasonally Adjusted Employees

Industry Title	November 2021	Last Month		Last Year	
		Employed	Percent Change	Employed	Percent Change
Total Nonagricultural	844,410	843,348	0.1%	814,513	3.7%
Total Private	658,440	659,005	-0.1%	633,601	3.9%
Goods Producing	62,066	61,606	0.7%	60,991	1.8%
Mining, Logging and Construction	32,562	32,375	0.6%	31,265	4.1%
Manufacturing	29,427	29,197	0.8%	29,649	-0.7%
Service Providing	782,185	781,520	0.1%	753,371	3.8%
Trade, Transportation and Utilites	176,624	178,609	-1.1%	172,118	2.6%
Information	8,657	8,594	0.7%	7,954	8.8%
Financial Activities	30,798	30,835	-0.1%	30,197	2.0%
Professional and Business Services	78,976	79,652	-0.8%	77,361	2.1%
Education and Health Services	192,629	192,155	0.2%	184,587	4.4%
Leisure and Hospitality	89,460	88,754	0.8%	81,986	9.1%
Other Services	19,253	19,158	0.5%	18,464	4.3%
Government	184,788	184,353	0.2%	179,823	2.8%

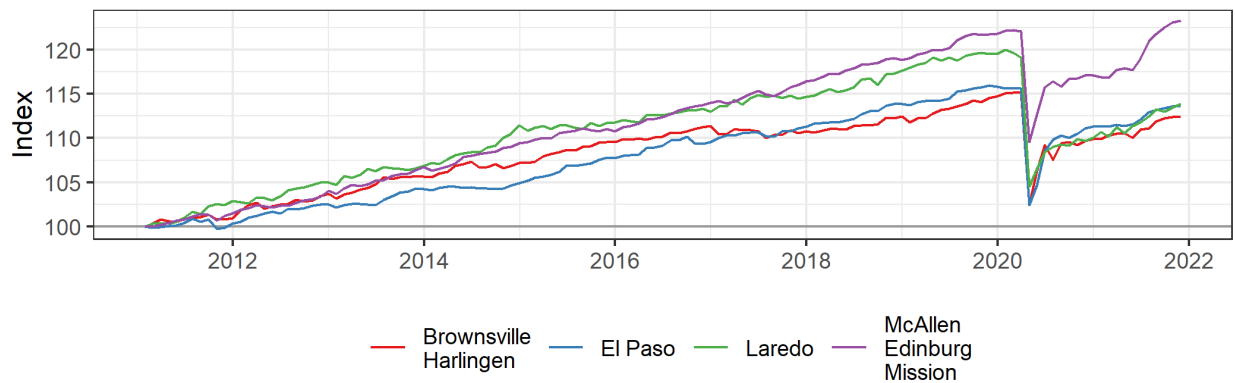
Sources: Texas Workforce Commission and Texas Real Estate Research Center at Texas A&M University

Figure 7: Border Metro Employment Growth



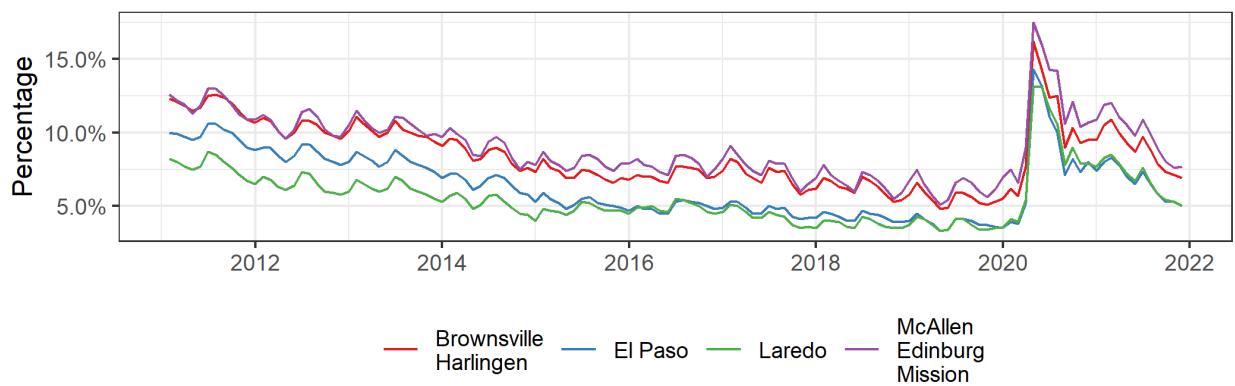
Sources: Texas Workforce Commission and Texas Real Estate Research Center at Texas A&M University

Figure 8: Border Metro Employment Index



Sources: Texas Workforce Commission and Texas Real Estate Research Center at Texas A&M University

Figure 9: Border Metro Unemployment Rate



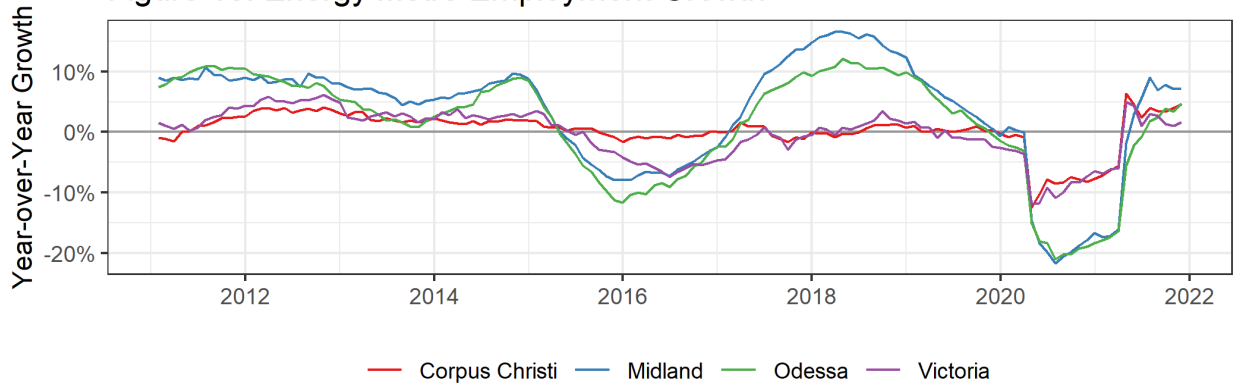
Sources: Texas Workforce Commission and Texas Real Estate Research Center at Texas A&M University

Table 17: Energy Metro Nonfarm Seasonally Adjusted Employees

Industry Title	November 2021	Last Month		Last Year	
		Employed	Percent Change	Employed	Percent Change
Total Nonagricultural	398,682	395,176	0.9%	379,785	5.0%
Total Private	336,035	333,279	0.8%	317,838	5.7%
Goods Producing	82,470	82,621	-0.2%	77,155	6.9%
Mining, Logging and Construction	65,723	65,825	-0.2%	60,486	8.7%
Manufacturing	16,535	16,549	-0.1%	16,463	0.4%
Service Providing	312,233	310,935	0.4%	298,793	4.5%
Trade, Transportation and Utilites	80,204	80,222	0.0%	76,923	4.3%
Information	3,122	2,967	5.2%	2,925	6.7%
Financial Activities	17,934	17,847	0.5%	17,146	4.6%
Professional and Business Services	33,314	33,338	-0.1%	31,924	4.4%
Education and Health Services	49,613	49,413	0.4%	48,909	1.4%
Leisure and Hospitality	51,110	50,509	1.2%	45,328	12.8%
Other Services	14,195	14,166	0.2%	13,604	4.3%
Government	62,406	62,055	0.6%	61,712	1.1%

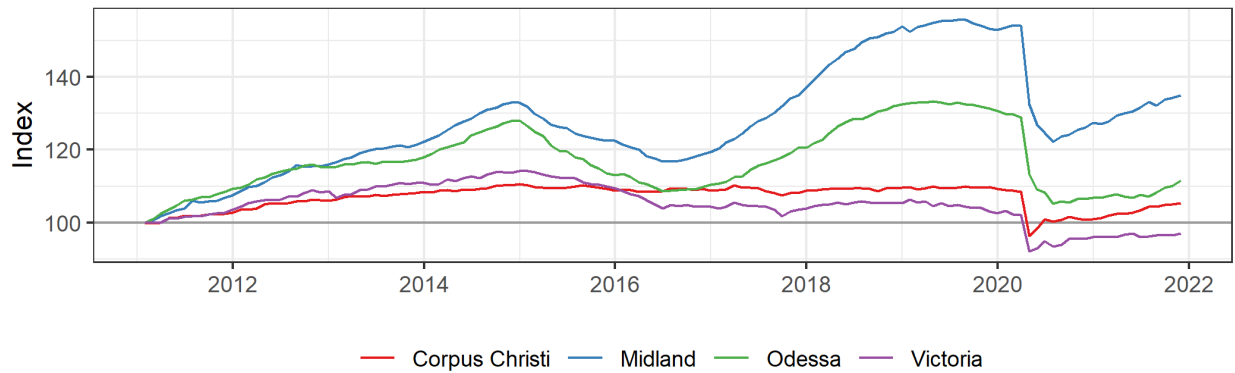
Sources: Texas Workforce Commission and Texas Real Estate Research Center at Texas A&M University

Figure 10: Energy Metro Employment Growth



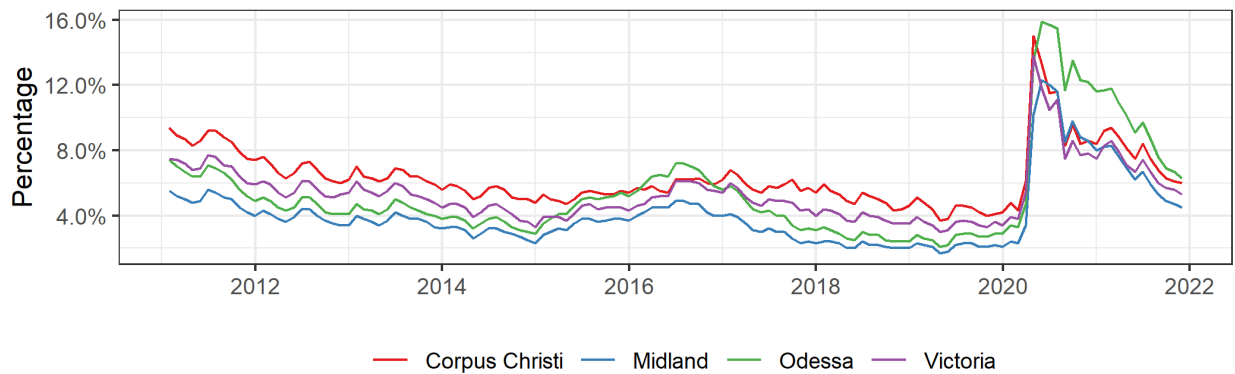
Sources: Texas Workforce Commission and Texas Real Estate Research Center at Texas A&M University

Figure 11: Energy Metro Employment Index



Sources: Texas Workforce Commission and Texas Real Estate Research Center at Texas A&M University

Figure 12: Energy Metro Unemployment Rate



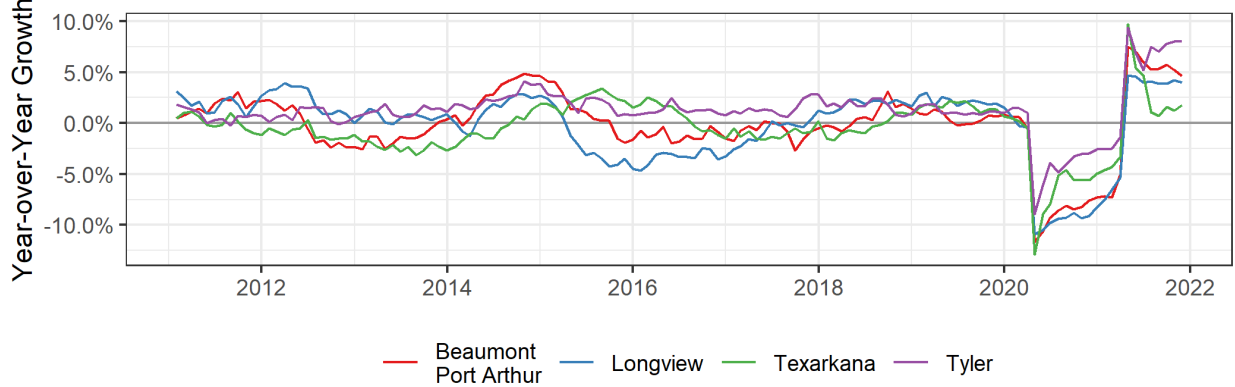
Sources: Texas Workforce Commission and Texas Real Estate Research Center at Texas A&M University

Table 18: East Texas Metro Nonfarm Seasonally Adjusted Employees

Industry Title	November 2021	Last Month		Last Year	
		Employed	Percent Change	Employed	Percent Change
Total Nonagricultural	428,066	426,462	0.4%	407,790	5.0%
Total Private	363,167	361,336	0.5%	343,942	5.6%
Goods Producing	85,229	84,888	0.4%	78,574	8.5%
Mining, Logging and Construction	40,714	40,464	0.6%	37,151	9.6%
Manufacturing	44,572	44,406	0.4%	41,477	7.5%
Service Providing	342,708	341,193	0.4%	329,109	4.1%
Trade, Transportation and Utilites	89,712	89,153	0.6%	86,529	3.7%
Information	3,432	3,444	-0.4%	3,428	0.1%
Financial Activities	16,639	16,639	0.0%	16,540	0.6%
Professional and Business Services	39,656	39,321	0.9%	35,883	10.5%
Education and Health Services	70,247	70,059	0.3%	68,844	2.0%
Leisure and Hospitality	44,048	43,714	0.8%	40,443	8.9%
Other Services	14,238	13,636	4.4%	13,740	3.6%
Government	64,293	65,171	-1.3%	63,295	1.6%

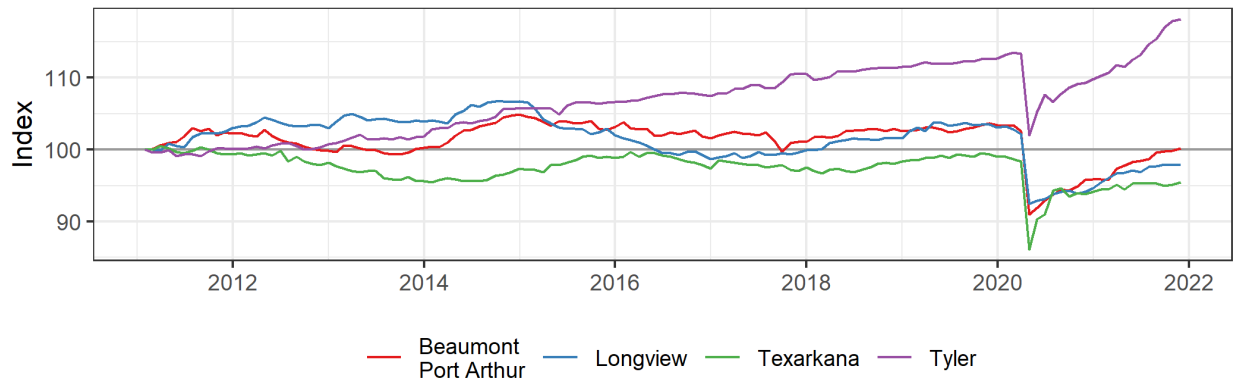
Sources: Texas Workforce Commission and Texas Real Estate Research Center at Texas A&M University

Figure 13: East Texas Metro Employment Growth



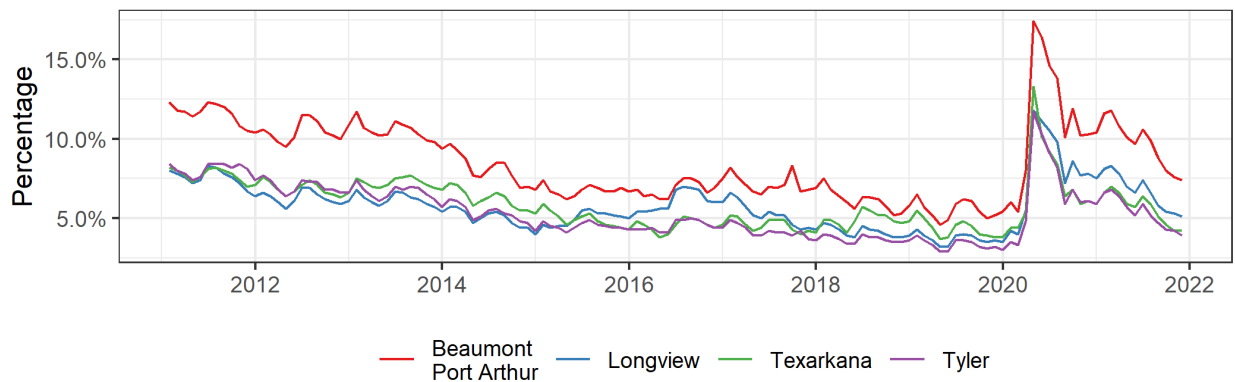
Sources: Texas Workforce Commission and Texas Real Estate Research Center at Texas A&M University

Figure 14: East Texas Metro Employment Index



Sources: Texas Workforce Commission and Texas Real Estate Research Center at Texas A&M University

Figure 15: East Texas Metro Unemployment Rate



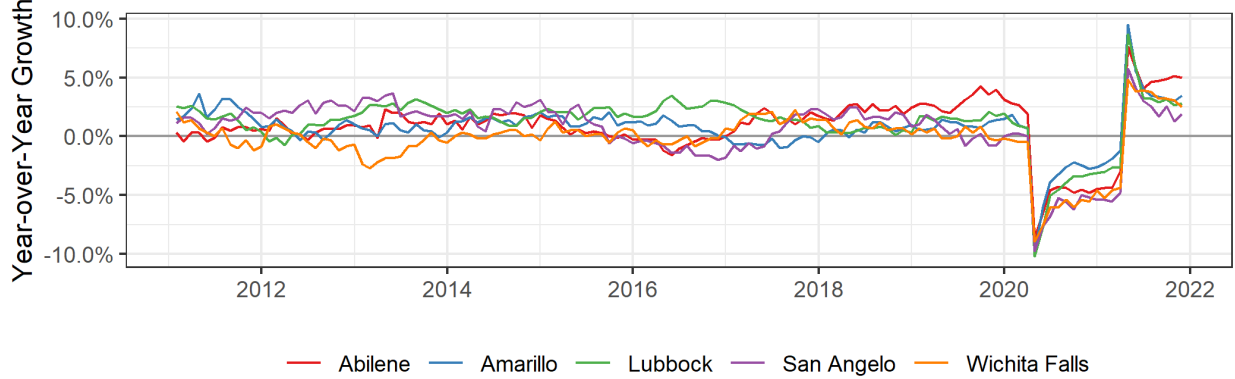
Sources: Texas Workforce Commission and Texas Real Estate Research Center at Texas A&M University

Table 19: West Texas Metro Nonfarm Seasonally Adjusted Employees

Industry Title	November 2021	Last Month		Last Year	
		Employed	Percent Change	Employed	Percent Change
Total Nonagricultural	453,551	452,988	0.1%	438,980	3.3%
Total Private	363,448	363,149	0.1%	350,485	3.7%
Goods Producing	57,712	57,447	0.5%	56,418	2.3%
Mining, Logging and Construction	27,093	27,057	0.1%	26,793	1.1%
Manufacturing	30,568	30,408	0.5%	29,574	3.4%
Service Providing	395,733	395,445	0.1%	382,475	3.5%
Trade, Transportation and Utilites	90,273	90,812	-0.6%	88,475	2.0%
Information	5,967	6,043	-1.3%	6,061	-1.6%
Financial Activities	23,895	23,943	-0.2%	23,597	1.3%
Professional and Business Services	37,968	38,045	-0.2%	35,644	6.5%
Education and Health Services	73,851	73,964	-0.2%	72,666	1.6%
Leisure and Hospitality	55,470	55,641	-0.3%	50,478	9.9%
Other Services	17,832	17,774	0.3%	16,733	6.6%
Government	89,938	89,984	-0.1%	88,337	1.8%

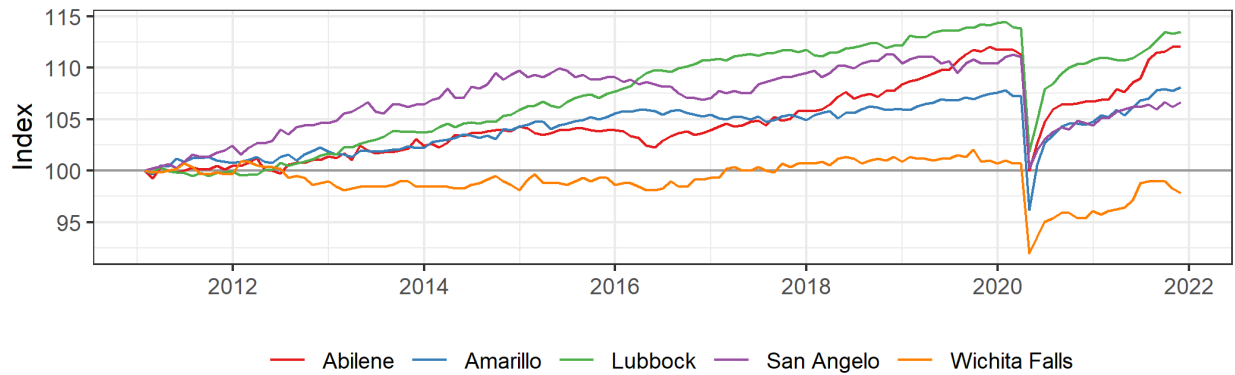
Sources: Texas Workforce Commission and Texas Real Estate Research Center at Texas A&M University

Figure 16: West Texas Metro Employment Growth



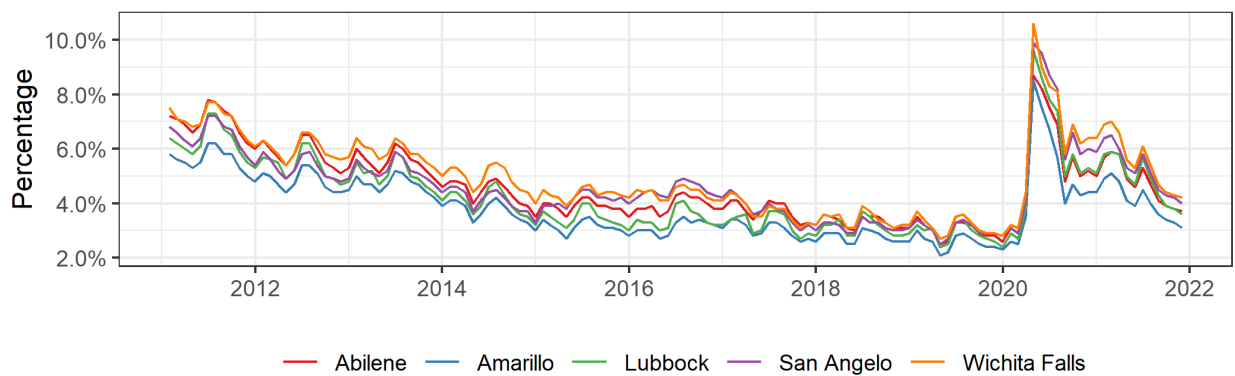
Sources: Texas Workforce Commission and Texas Real Estate Research Center at Texas A&M University

Figure 17: West Texas Metro Employment Index



Sources: Texas Workforce Commission and Texas Real Estate Research Center at Texas A&M University

Figure 18: West Texas Metro Unemployment Rate



Sources: Texas Workforce Commission and Texas Real Estate Research Center at Texas A&M University



TEXAS A&M UNIVERSITY

Texas Real Estate Research Center



MAYS BUSINESS SCHOOL

Texas A&M University
2115 TAMU
College Station, TX 77843-2115

<http://recenter.tamu.edu>
979-845-2031

EXECUTIVE DIRECTOR

GARY W. MALER

ADVISORY COMMITTEE

RUSSELL CAIN, CHAIRMAN
Port Lavaca

DOUG JENNINGS, VICE CHAIRMAN
Fort Worth

TROY ALLEY BESA MARTIN
DeSoto Boerne

DOUG FOSTER TED NELSON
Lockhart Houston

VICKI FULLERTON BECKY VAJDAK
The Woodlands Temple

PATRICK GEDDES BARBARA RUSSELL, EX-OFFICIO
Dallas Denton



LinkedIn
[linkedin.com/company/recentertx](https://www.linkedin.com/company/recentertx)



Instagram
[@recentertx](https://www.instagram.com/recentertx)



YouTube
[YouTube.com/realestatecenter](https://www.youtube.com/realestatecenter)



Facebook
[@recentertx](https://www.facebook.com/recentertx)



Twitter
[@recentertx](https://twitter.com/recentertx)